



Tribal Health Compendium

[Shining a spotlight on JSS Medical College tribal health initiatives]



Conspectus of Tribal Health

Shining a spotlight on
JSS Medical College tribal health initiatives

10
REDUCED
INEQUALITIES



3
GOOD HEALTH
AND WELL-BEING



Overview

Tribal community accounts for 8.6% of the total Indian population. Poor access to healthcare, higher prevalence of communicable as well as non-communicable diseases, poor maternal and child health, genetic disorders, neglected mental health and several other factors play significant role in their health outcomes. Keeping this in mind JSS Medical College and Hospital has been working towards improvement in tribal health through several initiatives. These have been carried out while being mindful of the socioeconomic and ethnic values that are fundamental to them. Due to its strategic location at the intersection of Tamil Nadu, Kerala, and Karnataka, Mysore City is easily accessible to the main tribal populations.

This compilation speaks in detail about the multipronged approach of JSS Medical College & Hospital, towards tribal health and to construct a road map that leads to effective interventions, and set goals to promote good health and wellbeing.

Message



According to 2011 census, over 104 million tribal people, spread over 705 tribes live in India. Despite constituting such a larger proportion of population, tribal people have remained, geographically, socioeconomically, politically marginalized. Poverty, improper living conditions, diverse socio-cultural practices, lack of educational opportunities, lower health seeking behaviour and inaccessibility to health care services make tribals more vulnerable to health consequences.

Tribal population in India, suffer from quadruple burden of health problems, namely, communicable diseases, non-communicable diseases, malnutrition and mental health issues including the substance abuse/addiction. The government and non-governmental organizations across the country are working tirelessly towards improving the health and wellbeing of tribal population, through multitude of approaches which are tailored to the needs of these indigenous communities.

JSS Medical College, a constituent college of JSS Academy of Higher Education and Research is committed to provide quality, cost effective and evidence-based health care to all sections of society since its inception in the year 1984. As a committed institution to strengthen India's efforts in achieving the United Nation's Sustainable Development Goals, JSS Medical College has taken several initiatives to improve health and wellbeing of rural, urban, and tribal population in Mysuru and surrounding districts.

This compendium on "Shining a spotlight on JSS Medical College Tribal health initiatives" is an effort to showcase various activities taken by our institution towards improving the health and social standards of people living in the tribal areas through evidence-based research and innovative solutions.

I would like to place on record, my special appreciations to Dr Deepa Bhat, Associate Professor, Department and Anatomy and Dr Suma MN, Vice Principal, JSS Medical College, Mysuru for conceptualizing this compendium. I would also like to thank all the faculty members and social workers of our institution who are working towards tribal health initiative.

Dr H Basavanagowdappa
Principal

Editors Desk

The compendium shines spotlight on the tribal health initiatives undertaken at JSS Medical College & Hospital. It shows the institution's fervour, devotion, and vision towards the better tribal health. We aim to contribute more to collaborate for the indigenous community's welfare in future.



Dr Deepa Bhat

BGCI Level II Genetic Counsellor
Associate Professor of Anatomy
JSS Medical College & Hospital

Conceptualised and Coordinated By



Dr Suma M N

Vice-principal (Pre Clinical)
Professor of Biochemistry



Dr Praveen Kulkarni

Vice-principal (Para Clinical)
Associate Professor of
Community Medicine

Highlights of tribal initiatives

- Key areas of research : a) Non communicable diseases- Hypertension and diabetes mellitus b) Smoking, Alcohol and Substance abuse c) Mental health d) Hemoglobinopathies e) Reproductive health
- Tribal Health Education
- Center for Training, Research, Innovation in Tribal health (CTRITH) – a Virtual tribal health center granted by India Alliance Wellcome Trust
- Capacity building through training of doctors, community and health care delivery system in providing better health care
- Tribal empowerment through job creation
- Research grants and Publications
- Fulfilling objectives of many SDGs



RESEARCH

JSS Medical College is undertaking several impactful research projects focusing on various domains of health and wellbeing among the tribal communities. The credibility of researchers from the institution in carrying out quality research has been recognized by national and international funding agencies. The research outcomes and recommendations have facilitated the stakeholders at various levels to bring policy changes and publications.

Completed Projects

Sl No	Title of Study	Funding Agency	Duration	Grant Amount	Principal Investigator
1	A Study of Tribal Health - Jenu Kuruba Tribe in Karnataka with Special Reference to Diabetes and Hypertension	Indian Council of Medical Research (ICMR)	1 st December 2010 to 30 th November 2013 3 years	52 Lakhs	Dr. H. Basavanagowdappa, Professor of Medicine & Principal
2	Evaluation Of Janani Suraksha Yojana Program In Mysore	St Johns Medical College, Bangalore	Jan 2014 To October 2014 6 months	2.97 Lakhs	Dr Hugar Siddalingappa, Department of Community Medicine
3	Prevalence and Gene typing of Beta Thalassemia, Sick cell anemia traits and G6PD deficiency among Tribal School Children of Mysore District, Karnataka	Indian Council of Medical Research (ICMR)	December 2014 to 2017 3 years	10.5 Lakhs	Dr. Praveen Kulkarni, Vice Principal [para clinical] and Associate Professor, Department of Community Medicine
4	Improving the Capacity of Health System and Community for Sick Cell Disease Screening and Management: An Intervention Study	ICMR National Task Force- Sick Cell Disease	1st Sept.2019 to 30 th June 2022 for 2 yrs 11 months.	75 Lakhs	Dr. Deepa Bhat Associate Professor Department of Anatomy

A Study of Tribal Health - Jenu Kuruba Tribe in Karnataka with Special Reference to Diabetes and Hypertension



Ongoing Projects

Sl No	Title of Study	Funding Agency	Duration	Grant Amount	Principal Investigator
1	Micronutrient deficiency and cognitive dysfunction in tribal areas Job created: 1 research assistant.	DBT	2 years	27.50 Lakhs	Dr.Praveen Kulkarni
2	Center grant for establishing CTRITH [Centre for Training, Research, and Innovation in Tribal Health] Total grant 9.8 crores to center with to JSS related work. Work Package 3 of the project intends to establish population based hemoglobinopathies registry in Chamarajanagara district of Karnataka. This would establish genotype, clinical profile and establishment of registry for sickle cell disease, thalassemia and G6PD deficiency in the district. Collaborators: IPH Bengaluru, Indian Institute of Public Health Hyderabad-Bengaluru (IIPHH) and JSS Medical College & Hospital Job created: a) Senior resident -01 b) PHRTP [Public Health Research Training Program] fellow -01	India Alliance DBT Wellcome Trust	October 2021 to September 2026	1.3 crore	Dr Deepa Bhat
3	National Taskforce Project entitled, “sickle Cell Disease-related stigma, economic loss and quality of life among tribal population of India - Mysore district, Karnataka” Job created: 1 scientist C and 2 research assistants	Indian Council of Medical Research (ICMR)	2 years 1 st December 2022 to 30 th November 2024	35 lakhs	Dr Deepa Bhat

4	Ambari Sickle Cell Disease Health Systems Project Job created: 1 research assistant	Novartis	1 year 20 th January 2023 to 31 st December 2023	28 lakhs	Dr Anil Bilimale
5	“A comparative Study on Cognitive abilities between Hydroxyurea treated and untreated Sickle Cell Disease (SCD) children and possible intervention for SCD children Job created: 2 research assistant	Indian Council of Medical Research (ICMR)	18 months 15 th December 2022 to 15 th June 2024	20 lakhs	Dr Deepa Bhat

Clinical Trial

1. B-Vocal SCD-Burden of Vaso-Occlusive pain crisis: A Cross-sectional observational study among patients with sickle cell disease in India. Study Number: CSEG101AINo1 with NOVARTIS. Completed in November 2022. This is a multicentric study conducted across 11 sites across India

PhD Awarded

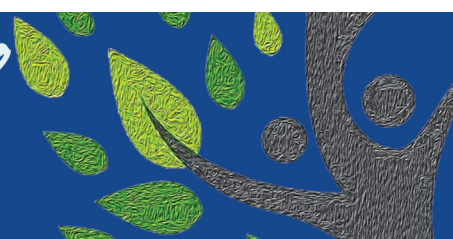
1. Feeding practices and nutritional status of under five children among selective tribal communities of Mysore district granted to Dr Renuka M, Professor of Community Medicine & Dy Controller of Examinations, JSSAHER

ICMR STS Projects

1. Prevalence of Frailty and its association with Vitamin D, Calcium deficiency and nutritional status among elderly residing in Tribal areas of Mysuru, Karnataka Student: Vishal Juneja under Dr Praveen Kulkarni for 6 months
2. Prevalence and role of sociodemographic variables, Family planning services, Gender preferences and Decision making on Sterilization Regret among Women in Urban, Rural and Tribal areas. Student: Ms. Palak Talwar under Dr Smitha MC for 6 months
3. Prevalence and beta thalassemia, sickle cell anemia traits among high school children in tribal areas of Mysuru, Karnataka – 2016 Student: Shivani under Dr. Praveen Kulkarni for 6 months.

Accepted Projects

1. “Screening for Sexually transmitted infections (STIs) and Assessment of sexual health practices among tribal women population of H.D. Kote in Mysuru district, South India” with Dr Vidya Vinayak as principal investigator, Department of Microbiology.





Collaboration



1. **Piramal Swasthya** Public Health, Tribal Health Collaborative research on health services, public policy, health equity especially with tribal communities, comprehensive primary health care, non-communicable diseases, neglected tropical diseases and other key elements of health for all and universal health coverage. Internship for 3 students in 2022 - MOU



2. **Novartis**: Novartis has long been committed to understanding and developing treatments for hemoglobinopathies, a group of inherited blood disorders that includes sickle cell disease (SCD). The intent of collaboration in Sickle Cell Disease, is towards health system strengthening. Objective 1: Identification of Mentors & Formation of state specific SCD Technical Committee to conceptualize and implement SCD care model in the region. Objective 2: Education & Certification Program of HCPs managing SCD in Karnataka. Objective 3: Development of SCD management protocol: Objective 4: Defining the way forward charter to establish Integrated SCD.SCD care model project proposal submitted



3. **University Of Arizona**: International Collaboration for empowering Public Health Education To work jointly in developing and implementing research with regard to health services, public policy, health equity especially with tribal communities, comprehensive primary health care, non-communicable diseases, and other key elements of health for all and universal health coverage. Joint PhD programme & internship training Faculty exchange program under Full bright Scholarship through MOU



4. **Shanmukh solutions**: A start up from Indian Institute of Science collaborated towards "Evaluation of novel IVD kits for the diagnosis of hemoglobinopathies, such as sickle cell anemia and beta-thalassemia". The kit has obtained CDSCO permission. JSS Medical College assisted them with samples to validate their kits and obtain inputs for the same.

5. **Organization for Rare Disease India (ORDI)** is a national umbrella organization representing the collective voice of all patients with rare diseases in India, setup as a section 25 non-profit company in India. The vision is to provide a better Life for people with Rare Diseases. ORDI's mission is to be



the strong united voice for all rare diseases in India, to reduce inequalities and ensure that people living with rare diseases have access to the same resources as any other population. Rare Disease Care Coordination Center (RDCCC) was established under the aegis of ORDI has been assisting the rare disease community attending JSS Hospital.



6. **Tata Institute for Genetics and Society (TIGS)** a non-profit research institute that aspires to develop solutions to challenges in human health and agriculture. The most significant challenges that impede the achievement of health equity and nutrition security for all of India's population require systematic evidence-based scientific advancements and technological solutions. The collaboration intends to improve access to affordable and quality diagnostics and therapeutics for rare genetic disorders with specific concern towards hemoglobinopathies.



7. **Institute of Public Health (IPH) and Indian Institute of Public Health (IIPH):** The collaboration led to successful grant leading to establishment of Center for Training Research and Innovation in Tribal Health (CTRITH), a multi-institutional research and action center funded by the DBT/Wellcome Trust India Alliance grant (2021-2026). A brief overview of CTRITH is available in website: <https://iphindia.org/centre-for-training-research-and-innovation-in-tribal-health-ctrith/>. The IPH Bengaluru with the state department of tribal welfare has initiated specific works on neglected issues in tribal health. IPH Bengaluru with its long-term field station, Vivekananda Girijana Kalyana Kendra at B R hills have been working since 2014 on various issues related to Adivasi community health and wellness. The details are available <http://www.iphindia.org>. The objective is to provide technical support and assistance to set up a model hemoglobinopathy registry and initiate on-ground screening and treatment/management of SCD in Adivasi areas.



8. **Swami Vivekananda Youth Movement (SVYM):** Swami Vivekananda Youth Movement (SVYM) is a nonreligious, non-political and not for profit organization with its administrative headquarters in Saragur, Karnataka state, India. SVYM runs seven institutions and has 50 projects in the area of Health, Education, SEEP (Socio Economic Empowerment Program) and TRAC (Training, Research, Advocacy and Consultancy), spread over 27 districts of Karnataka State. The collaboration has led to exposure of MBBS, MD/MS, Mater of Public Health with academic exposure to the tribal health setting, collaborative research in Hemoglobinopathies, public health & palliative care, reproductive and child health, tuberculosis, mental health and many significant areas.

Publications

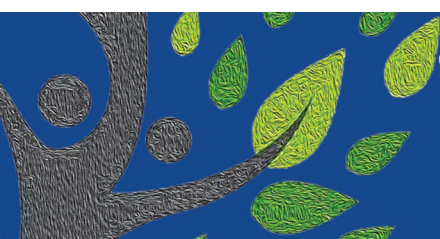
1. Hathur B, Basavegowda M, Ashok NC. Hypertension: An emerging threat among tribal population of Mysore; Jenu Kuruba tribe diabetes and hypertension study. *International Journal of Health & Allied Sciences*. 2013 Oct 1;2(4):270.
2. Hathur B, Basavegowda M, Kulkarni P, Ashok NC. Metabolic syndrome among diabetics and pre-diabetics of Jenu Kuruba tribe in Mysore district (JKDHS-2)—An evidence of metabolic abnormalities leading to increase in CVD's among Jenu Kuruba tribal population. *Diabetes & Metabolic Syndrome: Clinical Research & Reviews*. 2015 Oct 1;9(4):205-9.
3. Siddalingappa H, Hoogar V, Sunil Kumar D, Pradeep TS, Renuka M. Sociodemographic and healthcare profile of tribal people in Bandipur tiger reserve area, Mysore, Karnataka, India. *International Journal of Community Medicine and Public Health*. 2016 Sep;3(9):2655-60.
4. Nutritional & Health status among Jenukuruba tribal children in Mysore dist Dr.Narayanappa D Dr.Rajani H S, Dr.Jagadish Kumar, Paediatric Review *International Journal of Paediatric International* 2016 2(4)
5. Health Seeking Behaviour among Patients with Tuberculosis Attending Tribal Health Care Centres of H.D.Kote Taluk, Mysuru District. Dr.Prakash.B *International Journal of Health Sciences & Research International* 2016 6(8) 3438
6. Prevalence of prehypertension and hypertension among jenukuruba tribal children in mysore district., Narayanappa, HS Rajani, k Jagadish kumar, VG Manjunath. *Pediatric Review, International Journal of Pediatric Research International* Vol 4/No1/ Jan201 7, pp03 07
7. Tarikere PS, Prakash B, Praveen K, Narayana M. Factors affecting mental abnormalities among high school children in tribal, rural and urban Mysuru, Karnataka. *National Journal of Community Medicine*. 2018;9(4):255-9.
8. Boralingiah, Prakash; Chauhan, Dennis. Knowledge, attitude and practices regarding tuberculosis among patients with TB attending tribal health care centres of H.D. Kote taluq, Mysuru district. *International Journal Of Community Medicine And Public Health [S.l.]*, v. 4, n. 12, p. 4744-4749, nov. 2017. ISSN 2394-6040.
9. Madhu B, Prathyusha K, Prakruthi P, Srinath KM. Comparison of prevalence of life style risk factors and 10 year risk of CVD event among rural and tribal population of Kollegal Taluk, Chamrajanagar District, South India. *Diabetes & Metabolic Syndrome: Clinical Research & Reviews*. 2019 Sep 1;13(5):2961-6.
10. Boralingiah P, Chauhan D. Socio-Demographic and Cultural Factors Influencing Treatment Outcomes among Patients with Tuberculosis Attending Tribal Health Care Centers of HD Kote Taluk, Mysuru District. *EXECUTIVE EDITOR*. 2019 Mar;10(3):66.
11. Smitha MC. Determinants of Adolescents Attitude towards Gender Equality in Urban, Rural, and Tribal Areas of the Southern Part of India. *Online Journal of Health and Allied Sciences*. 2020 Sep 20;19(2).
12. Kumar DS, Kulkarni P, Murthy MN. Estimation of cardiovascular diseases (CVD) risk using

- WHO/ISH risk prediction charts in tribal population of Chamarajanagar district, Karnataka. *Clinical Epidemiology and Global Health*. 2020 Dec 1;8(4):1217-20.
13. Rajani HS, Narayanappa D, Kumar KJ, Manjunath VG. Prevalence of dermatoses among jenukuruba tribal children. *Indian Journal of Paediatric Dermatology*. 2020 Oct 1;21(4):279.
 14. Kumar DS, Kulkarni P, Murthy MN. Estimation of cardiovascular diseases (CVD) risk using WHO/ISH risk prediction charts in tribal population of Chamarajanagar district, Karnataka. *Clinical Epidemiology and Global Health*. 2020 Dec 1;8(4):1217-20.
 15. Babu BV, Sridevi P, Surti SB, Ranjit M, Bhat D, Sarmah J, Sudhakar G, Sharma Y. Improving the capacity of health system and community for sickle cell disease screening and management among tribal population in India: protocol of an intervention study. *Current Health Sciences Journal*. 2020 Jul;46(3):270.
 16. Babu BV, Sridevi P, Surti S, Ranjit M, Bhat D, Sarmah J, Sudhakar G, Sharma Y. Inadequate community knowledge about sickle cell disease among the Indian tribal population: a formative assessment in a multicentric intervention study. *Transactions of The Royal Society of Tropical Medicine and Hygiene*. 2021 Dec;115(12):1434-44.
 17. Ray, S. S., Doddaiiah, S. K., N., C., Gopi, A., M. R., N. M., & Bilimale, A. S. (2021). Oral health status of the tribal population of Chamarajanagar district, Karnataka. *International Journal Of Community Medicine And Public Health*, 8(10), 4902–4908. <https://doi.org/10.18203/2394-6040.ijcmph20213791>
 18. Babu BV, Sridevi P, Surti S, Ranjit MR, Bhat D, Sarmah J, Sudhakar G, Sharma Y. Prevalence of sickle cell disease among children of tribal population in India: feasibility of screening at community level in low-resource settings. *Pediatric Blood & Cancer*. 2021 Jun;68(6):e28911.
 19. Yadav K, Murthy MN, Prasad M, Kulkarni P. Patterns of utilization of maternal and child health care among tribals of HD Kote Taluk Mysore. *Indian Journal of Medical Specialities*. 2021 Apr 1;12(2):69.
 20. Yadav K, Murthy MN, Prasad M, Kulkarni P. Factors driving the “preferred place for delivery” among tribal women in Southern India. *International Journal of Health & Allied Sciences*. 2021 Jul 1;10(3):211
 21. Babu BV, Sharma Y, Sridevi P, Surti SB, Ranjit M, Bhat D, Sarmah J, Sudhakar G. Feasibility of population-based screening of sickle cell disease through the primary health care system in tribal areas of India. *J Med Screen*. 2022 Aug 28;9691413221123131. doi: 10.1177/09691413221123131. Epub ahead of print. PMID: 36036388.
 22. Babu BV, Sridevi P, Surti SB, Ranjit M, Bhat D, Sarmah J, Sudhakar G, Sharma Y. Peripheral health workers' knowledge and experience related to sickle cell disease: an in-depth interview study in six tribal-dominated districts of India. *J Community Genet*. 2022 Jun;13(3):329-338. doi: 10.1007/s12687-022-00578-z. Epub 2022 Feb 1. PMID: 35103923; PMCID: PMC9270504.
 23. Sharma CP, Prakash KG, Jain A, Vidya CS. Correlation of Length of Ulna With Height to Estimate Stature in Female Tribal Population of Udaipur District: a Cross Sectional Study. *Journal of Morphological Sciences Vol*. 2022;39:442.

24. Hegde S, Chandrashekarappa SM, Akbar S, Murthy MN. Community perceptions with regard to mental illness in urban, rural, and tribal areas in Mysuru. Archives of Mental Health. 2022 Jan 1;23(1):47.
25. Sindhu KV, Chandrashekarappa SM, Thambad M, Boralingiah P, Gopi A, Murthy MN. Anxiety and depression among elderly tribal population of HD Kote, Mysuru, India: Prevalence and factors associated with it. Archives of Mental Health. 2022 Jan 1;23(1):40.

Postgraduate Dissertation topics

Sl. No	Name	Topic	Guide
1	Dr. Kavitha Yadav	Factors influencing the choice of place of delivery among tribals of HD Kote Taluk, Mysore	Dr.M.R.Narayana Murthy
2	Dr. Dennis D Chauhan	Factors influencing adherence to treatment and its outcomes among patients with tuberculosis attending tribal health care centres of HD Kote taluk, Mysore district.	Dr. Prakash. B
3	Dr. Pallabi Priyadarshini	A study on prevalence and factors associated with low birth weight of newborn among tribal population in HD Kote Mysore.	Dr. M.R.Narayana Murthy
4	Dr. Arun P Baby	Mental Health status and quality of life among caregivers of patients with permanent disabilities attending rehabilitation Centres situated in tribal areas of Mysore Dist.	Dr. Prakasha .B
5	Dr. Pramoda .G	Performance evaluation of anganwadi centres in the tribal projects areas of Chamarajanagar District.	Dr.Prakash .B
6	Dr. Mohammed Junaid	Prevalence and Predictors of Substance abuse among tribal population of H D Kote taluk, Mysuru District	Dr Shwethashree M
7	Dr.Shibani Sushmitha Ray	Oral health status of the tribal population of Chamarajanagar district, Karnataka.	Dr Sunil Kumar D
8	Sindhu K V	Prevalence and factors associated with mental illness among the elderly tribal population of H D Kote taluk, Mysuru District.	Dr Smitha M C
9	Dr. Javeria Fathima	Assessment of magnitude of Behavioural risk factors for noncommunicable disease among the tribal population of H.D Kote Taluk,Mysuru, India	Dr Smitha M C
10	Nisarga.R	comparison of perceived happiness and satisfaction of maslows needs of motivation in urban, rural and tribal field practice areas of mysuru	Dr. Smitha M C (Ongoing)
11	Dr.Raghavi M	association of adverse childhood environment with depression and resilience among late adolescents and early adulthood in urban rural and tribal field practice areas	Dr. Smitha M C (Ongoing)





CENTRE FOR TRAINING, RESEARCH AND INNOVATION IN TRIBAL HEALTH

A virtual multi-institutional public health center supported by
the Department of Bio-Technology/Wellcome Trust India Alliance (2021-26)

An initiative by:



Centre for Training, Research, and Innovation in Tribal Health (CTRITH)

In order to establish a holistic centre for public health research and training with sole objective to improve tribal health, DBT/Wellcome Trust India Alliance has awarded the Institute of Public Health Bengaluru (IPH), Indian Institute of Public Health (IIPH), Hyderabad and JSS Medical College (JSSMC), Mysuru with a grant titled Centre for Training, Research, and Innovation in Tribal Health (CTRITH) in 2022. The team has partnered with a local non-governmental organization, community-based organizations, and government health departments to design, implement, and evaluate innovative community health interventions for neglected health problems including hemoglobinopathies and substance (tobacco and alcohol) use among tribal populations. Other activities at the centre include hemoglobinopathy registry implementation, initiating a birth cohort of Adivasi births in the district, and ethnographic socio-behavioural research on addictive substances and Adivasi communities. This project is guided by many elite scientists of national and international acclaim such as Padma Shri awardee and renowned human geneticist, Dr. RNK Bamezai as honorary advisory board member for this project.

About JSSMC role

In this project, under the leadership of Dr. Deepa Bhat, Associate Professor, Department of Anatomy, the JSS team will study the genetic profile, determine clinical characteristics and establish a population-based registry of hemoglobinopathies (such as Sickle cell disease, Thalassemia, and G6PD) for tribal populations in and around forested areas of Chamaraajanagar.



PROVISION OF BETTER LIFE

Financial Assistance to the Tribal children to Promote Education

Class: I PUC For the Year of: 2022-23			Class: I For the Year of: 2022-23		
Sl. No.	Particulars	Amount	Sl. No.	Particulars	Amount
1.	Application Fee	100-00	1.	Application	
2.	Room Rent	4000-00	2.	Room R	
3.	Canteen Money Deposit	2000-00	3.	Canteen	
4.	Building Fund	8000-00	4.	Building	
5.	ID Card	80-00	5.	ID Card	
6.	House Keeping Charges	850-00	6.	House B	
7.	Security Charges	500-00	7.	Security	
8.	Advance		8.	Advance	
9.	Others		9.	Others	
Total		15500-00			

Name: Chandana Class: I PUC For the Year of: 2022-23		
Sl. No.	Particulars	Amount
1.	Establishment Charges	5000-00
2.	Over Head Charges	3500-00
3.	Advance	
4.	Others	
5.	Fee	



Miss Chandana from Jenukuruba community of H D Kote taluk who had scored 92% in 10th standard was given financial assistance to pursue her higher education. She got admission in Science stream at JSS Women's college Ooty road Mysuru.



Providing medicines, clothes and food packets during covid



Seeking free hydroxyurea for Sickle Cell Disease patients.



Designing and Dissemination of Health Education Materials

ಸಿಕ್ಲರ್ ಸೆಲ್ ಕಾಯಿಲೆ
ಕುಡುಗೋಲು ಅಥವಾ ಕುಡ್ಡು ಕಾಯಿಲೆ

ಸಿಕ್ಲರ್ ಸೆಲ್ ಕಾಯಿಲೆ ಅಂದರೇನು ?
ಈ ಕಾಯಿಲೆಯಲ್ಲಿ ಕೆಲವು ರಕ್ತಗ್ರಾಣಗಳು "ಕುಡುಗೋಲು" ಅಥವಾ ಕುಡುಗೋಲು ಆಕಾರದಲ್ಲಿರುತ್ತವೆ. ಇವು "ಕುಡುಗೋಲು" ಅಥವಾ "ಕುಡುಗೋಲು" ಎಂದೂ ಕರೆಯಲ್ಪಡುತ್ತವೆ.

ರಕ್ತ ಒತ್ತಡ
• ಅಗಾಧ ಕಾಯಿಲೆ ರೋಗ
• ಪದೇ ಪದೇ ಜ್ವರ
• ತೀವ್ರ ಮೂಳೆ/ ಹೊಟ್ಟೆ ನೋವು
• ವಾತಾಯಾಗದ ಮುಚ್ಚುಗಳು

ಕಾಯಿಲೆಯಿಂದಾಗುವ ಸಮಸ್ಯೆಗಳು
• ಪದೇ ಪದೇ ಜ್ವರ
• ದೇಹದ ಯಾವುದೇ ಭಾಗದಲ್ಲಿ ಅಗಾಧ ನೋವಿನ ಅನುಭವ
• ಕುಟ್ಟಿ ಹೊಡೆಯುವುದು

ಕುಡುಗೋಲು ಕಾಯಿಲೆಯು ಜನ್ಮದಿಂದಲೇ ಇರುವ ಕಾಯಿಲೆಯಾಗಿದೆ. ಇದನ್ನು ಎಚ್ಚರಿಕೆಯಿಂದ ನಿರ್ವಹಿಸಬೇಕು.

ಸಿಕ್ಲರ್ ಸೆಲ್ ಕಾಯಿಲೆ
"ಕುಡುಗೋಲು ಕಾಯಿಲೆ"

ರೋಗಿಗಳ ಮತ್ತು ಅವರ ಕುಟುಂಬ ಮಾರ್ಗದರ್ಶಿ

ಕುಡುಗೋಲು ರೋಗವು ಜೀವನದ ಪರ್ಯಾಯ ಇರುವ ಒಂದು ಅನುವಂಶೀಯ ಕಾಯಿಲೆಯಾಗಿದೆ, ಸುಮಾರು ಶೇಕಡ ೫ ರಷ್ಟು ಜನರು ಇದರಿಂದ ಬಳಲುತ್ತಿದ್ದಾರೆ. ಇದು ಸಾಂಕ್ರಾಮಿಕ ರೋಗವಲ್ಲ. ಇದನ್ನು ಎಚ್ಚರಿಕೆಯಿಂದ ನಿರ್ವಹಿಸಬೇಕು.

ಚಿಕಿತ್ಸಾಬೀದಿ, ನಿಮ್ಮ ಆರೋಗ್ಯ ನಿಮ್ಮ ಕೈಯಲ್ಲಿ!

Liaison with government towards better SCD care

IEC/BCC materials for the SCD were developed during the research project and the same has been shared with the state government for the extension activities and state led programs in other districts. The materials were developed for health care workers, public, key community leaders, guide for doctors and for the SCD affected community.

Outreach Activities



Provision of vocational training assistance for self sustenance



Distribution of plants



Distribution of toys and school books



Distribution of blankets



Spreading awareness on the right to education and its importance

Science-on-Wheels- DST Stuti Scheme

“Science-on-Wheels” bus designed consisted of R&D equipment’s such as portable live- cell imaging microscope (Cytosmart), cancer cell lines, pH meters, colorimeters, micropipettes, rt-PCR, magnetic stirrer and anatomical models of human organs. In addition, the bus was internet-enabled and live stream videos related to science popularization attracted the young minds of rural and semi-urban students further showcasing recorded videos of notable Scientists and their contribution to Indian Science which was displayed as part of the awareness program on a large LED screen.

The Science-on-Wheels covered tribal areas, semi-urban and rural part of Mysore and Chamarajanagar to create awareness program through videos of scientific achievements, live experimental models, live skits, infographics, posters, oral health screening, anaemia screening and other aspects of science. Three buses carrying more than 130 faculty and students, along with “science-on-wheels” bus travelled to the different venues and reaching out to more than 4000 students. The events planned as a part of the science awareness week were held at various places as mentioned below covering more than 350 kms starting from Mysore-Kollegal- Chamarajnagar- Gundlupet-Sargur-DMG Halli-Suttur-Varuna-Mysore.



Activities through National Services Scheme

Several Tribal health camps organized with a motto of “Serving the Under-served: Tribal Health Welfare Initiative” in tribal areas of Mysuru and Chamrajnagara districts have won laurels and appreciation by Government of Karnataka.

Camps and health initiatives

Free Health Check Up Camp at Maddur Tribal Colony of Gundlupet Taluk-on 27-04-2015

This camp was jointly organized by NSS unit of JSS Medical College and Sri Sai Pragathi Foundation of Maddur colony. As a result of wide publicity before the camp, which was held at Girijana Ashrama School premises of Maddur colony, around 650 tribal people from surrounding hamlets participated and were benefited by 18 doctors. Vision testing, screening for blood pressure were done and free drugs were distributed to the needy patients. Tribal school children were examined by the Pediatricians and services from specialists in Medicine, Dermatology, ENT, Ophthalmology, Orthopedics and Community Medicine were provided to the tribal people. Cataract cases were referred for free operation at JSS Hospital Mysore. Total Number of Beneficiaries: 650.



Tribal Community Health Initiative Day at B Matakere

It was a unique day at B Mattikere, HD Kote Taluk on 28th November 2016. Team from Department of Community Medicine, JSS Medical College headed by Dr Renuka M, NSS wing headed by Dr Sunil Kumar, Inner Wheel club, Mysore members lead by Mrs Sejal and Pragati Foundation organized a Comprehensive Community Health Day at Tribal Ashrama School. Various activities for the day included demonstration on correct brushing techniques, participative 6 steps of hand washing techniques. Children were given toothbrushes and paste sponsored by IDA, Mysore Branch. Skit on ill-effects of Tobacco and Alcohol, importance of personal hygiene was well received by the community.

Interns and medicos volunteered to conduct the program. Over 2200 members including children, pregnant, nursing women mostly of Betta kuruba community participated in the programme. Medical checkup for children and adults was done by the team including Blood sugar testing. Free medicines were given based on the needs. Inner Wheel club members distributed sweaters, scarf, books and biscuits on the occasion. Seeds if green leafy vegetables and vegetables were given to Ashrama School to grow plants, produce of which would be utilized to be included in mid day meals for children attending Anganwadi and residential school.



Health Education sessions at tribal community and Ashrama school





Inauguration of the National task Force Sickle Cell Disease Program at H D Kote for improving the capacity of health system for screening and management of SCD.



Training the ASHA workers for at risk population and health care staff for the screening test at Annur PHC.



Encouraging indigenous practices through involvement of traditional healers in national SCD program



“Youth the future of nation” – targeting the right population for a better tomorrow



Health awareness on personal hygiene and environmental sanitation

Total Number of Beneficiaries: 2,200.

Free Health Check-up



Education and awareness

4 QUALITY EDUCATION



5 GENDER EQUALITY



10 REDUCED INEQUALITIES



Awards and accomplishments



“I have to act as a bridge between the tribals in the hamlets and also with the authorities and agencies in Mysuru.”

Dr Rathnamma, Scientist C working under Dr Deepa Bhat Associate Professor Dept of Anatomy who has been working for “Improving the capacity of health system in screening and management of sickle cell disease” as a part of National Task Force for Sickle cell disease has been recognized as DECCAN HERALD CHANGE MAKER 2022 for her contribution towards community empowerment. JSS Medical College and JSSAHER congratulate her for this achievement for being first women PhD holder working towards betterment of the tribal community especially women empowerment and Sickle cell disease. She has been supporting education of several children and encouraged her daughter to follow her footsteps by NEET accomplishments. She has been awarded PhD which has been a giant leap for her community https://22in22.deccanherald.com/rathnamma-s?fbclid=IwAR1PFkEB3MZuFCnn27yAAfUPFk23WUBphj6mpT_ef_qDweB4Yq6HexvTF4A



Recognition in CONNECT the Indian Institute of Science official magazine

The Sickle Cell Work of the JSS Medical College team led by Dr. Deepa Bhat has been featured in the CONNECT -Indian Institute of Science quarterly magazine, an initiative of the Office of Communications (OoC). Title of the article: An Uphill Battle - Researchers, doctors, and communities work together to manage a neglected disease by Deepika S and Ranjini Raghunath
Link to article: <https://connect.iisc.ac.in/2022/12/an-uphill-battle/>

Media

On World Sickle Cell Anime Awareness Day. Dr. Deepa Bhat, Associate Professor, Department of Anatomy, and Genetic Counselor, Department of Pediatrics, JSS Hospital JSS MC, JSSHER, Radio program at 91.2 FM JSS Janadhani telecasted on 19/06/2022 Sunday at 7:30 AM and 4:30 PM.



Towards - Mission to Eliminate Sickle Cell Anaemia by 2047



Towards - Mission to Eliminate Sickle Cell Anemia by 2047

The Sickle Cell Disease (SCD) has been a major health concern among tribal communities. The efforts of JSS Medical College & Hospital through ICMR National Task Force Sickle Cell anemia has been successful in improving the capacity of primary health care system in screening and management of SCD. The project has identified 38 patients and 150 carriers in just 2 PHCs and have been helping with disease management. Through CTRITH a population based hemoglobinopathies registry will be developed and provided to government to take it further. The AMBARI project funded by Novartis shall build a capacity of health system, develop education modules and improve SCD care in Karnataka. The expertise and assistance are being provided to state blood cell to provide a better implementation national SCD mission across 7 tribal dominant districts of Karnataka.





Road map for future

Intent to establish “Center of Excellence in Tribal Health” supported by Ministry of Tribal Affairs (MOTA)

- Develop JSS Medical College and Hospital as a health care center catering to improve reproductive and child health, non-communicable diseases, genetic health and mental health of the tribal community
- Collaborate and assist tribal dominant district government medical colleges for infrastructure planning and development and services towards tribal health
- Training and capacity building of health care system through hub and spoke model
- Develop a model of comprehensive care towards better tribal health
- Enhancement in availability, accessibility, and utilization of health services to the tribal population through community mobilization
- Optimal utilization of digital and artificial Intelligence based solutions for planning and implementation of innovative strategies to address health problems of tribal population
- Develop JSS Medical College and Hospital as a health care centre to comprehensively address preventive, promotive and curative health needs of tribal communities
- Joining hands with the Government and NGOs for uplifting health and socio-economic status of tribal communities
- Conduct high quality translational and transformational research on the tribal health issues and provide the feasible, impactful and cost effective policy recommendations
- Working towards Karnataka Sickle Cell Anaemia Control Mission

