



TUMORS OF SALIVARY GLAND

I. Pleomorphic adenoma/Mixed Salivary Gland Tumor

❖ This is the commonest tumor of major salivary glands.

❖ Clinical Features:

- i. **Site:** Pleomorphic adenoma is the commonest tumor of the parotid gland. Less common in other salivary glands.
- ii. **Sex:** More predilected towards Female than Male.
- iii. **Age:** Seen more frequently in 3rd and 5th decade of life.
- iv. **Consistency:** Tumor is solitary, smooth surfaced, painless and slow growing.

❖ Gross Appearance:

- a) Circumscribed, pseudo encapsulated, multiloculated, firm mass, 2-5cm in diameter with boss elated surface.
- b) The cut surface is grey-white and semi-translucent, usually solid but in small cystic spaces.

❖ Microscopic appearance:

- i. Highly variable because of diverse (Pleomorphic) nature of epithelial and mesenchymal tissue components of the neoplasm.

ii.

Ductal cells	Myoepithelial cells
They are cuboidal or columnar	They are spindle shaped
Forms various patterns like proliferates into ducts, tubules and sheets	Forms around ducts and tubules.

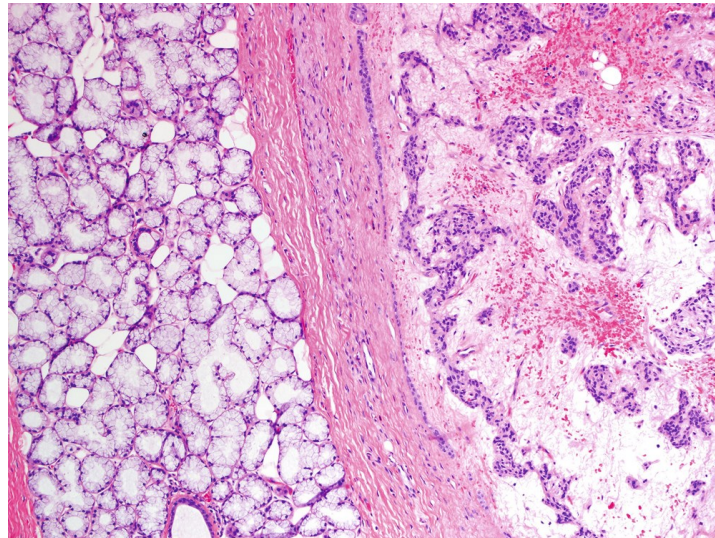
iii. Stromal Elements:

1. Loose connective tissue.
2. Myxoid, mucoid and chondroid matrix which stimulates cartilage (pseudocartilage).
3. There may be presence of true cartilage and bone in small proportion.

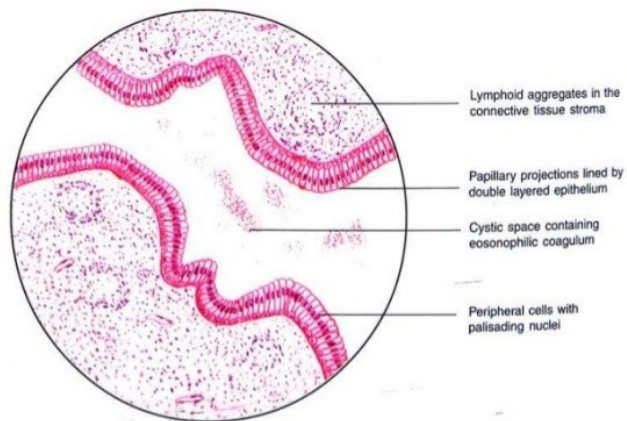


II. Warthin's Tumor (Papillary Cystadenoma Lymphomatosum/ Adenolymphoma)

- ❖ 2nd most common salivary gland tumor.
- ❖ Clinical features:
 - i. **Site:** It affects predominantly the parotid gland.
 - ii. **Age:** Seen more commonly in 4th and 7th decades of life.
 - iii. **Sex:** Males are commonly affected than Females (5:1).
- ❖ Morphologic features:
 - a) **Grossly:**
 - i. The tumor is encapsulated, round or oval with smooth surface.
 - ii. The cut surface shows characteristic slit-like or cyst spaces, containing milky fluid and having papillary projections.
 - b) **Microscopically:** the tumor shows two components:
 - 1) Epithelial parenchyma:
 - ✚ Composed of Glandular and cystic spaces.
 - ✚ Has papillary arrangements
 - ✚ Lined by characteristic eosinophilic epithelium
 - ✚ The epithelium cells covering the papillary folds/arrangement are columnar or cuboidal cells in two rows.
 - ✚ The epithelial parenchyma is surrounded by lymphoid stroma which often has germinal centres and prominent lymphoid tissue.
- ❖ Treatment:
 - 1. Surgical excision



PLEOMORPHIC ADENOMA



Warthin's tumor