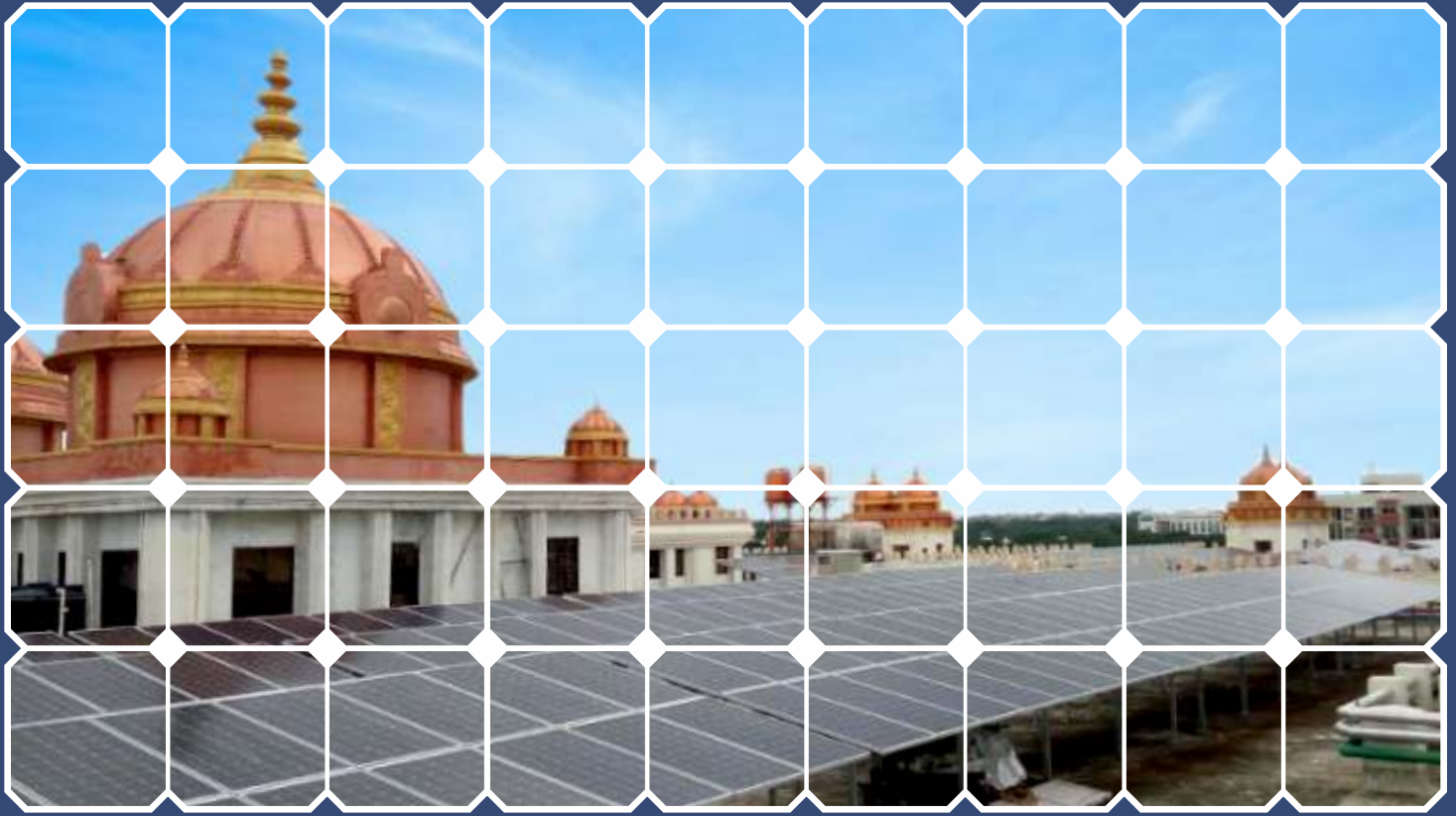


# Green Energy initiative in JSS Institutions



Total Capacity 3.191 MW

No. of Institutions Covered: 29

Life Span 25 years

Reduction in CO<sub>2</sub> Harmful Gas:  
11,010 MT per year

Energy Generated:  
1500 units/Per KW of solar unit per year



29 institutions of JSS MVP are installed with SRTPs with a total capacity of 3190 KWs, generating 47.88 Lakh Units of power per year. The resultant effect on energy savings is Rs. 16.8 crores per year during the supplier's credit period for 15 years and Rs. 37.80 crores per year during the non-supplier's credit period for 10 years. The average savings per year for 15 years with the present tariff is Rs. 1.11 crores per year. The average savings per year for 25 years with the present tariff is Rs. 2.18 crores per year.

JSS Institutions covering Twelve Colleges, One Hospital, Three Public Schools, One Boy's and One Girl's Hostels, One JSS Dasoha Bhavana, Two Mangala Mantapas, Two ITI's and Three Polytechnics, One Commercial Complex, One GINSERV (Incubation Center) are covered under SRTP Installations. The details are furnished in a separate document.

## Projects in the Offing

3 MW Capacity Ground Mounted Solar project is proposed in Kelageri, Dharwad/ Chamarajanagara to supply 45 lakhs units of power per year to JSS Hospital, Mysuru and other JSS Institutions under group captive scheme.

A 25-acres plot has been earmarked for this purpose in Kelageri, Dharwad / Chamarajanagar.

## Green Energy benefits

- Reduction in Co<sub>2</sub> is 11,010 MTs per year
- Savings of Petrol in measurement of liters is 14,40,078 per year
- Equivalent Diesel burned in MTs per year is 12,54,667
- Equivalent Coal burned in MTs per year is 16,93,442
- Carbon sequestered trees seedling grown for 10 years equivalent is 53,029 no's
- The remaining JSS Institutions will have nearly 3 MW Capacity solar installations in about 20 additional institutions.



## Green Energy Effects

Sl. No.	Name of the Institution	Carbon Dioxide Equivalent in Metric tons Per year	Petrol in liters consumed Equivalent Per year	Diesel in liters consumed Equivalent Per year	Coal burned in kgs Equivalent Per year	Carbon sequestered trees seedling grown for 10 years Equivalent In no's
1.	JSS Hospital, Mysuru	848l	3,61,356	3,14,832	4,24,932	13,308
2.	JSS Noida 23 acres plot	163	69,561	60,605	81,799	2,562
3.	JSS Noida 5 acres plot	149	63,538	55,358	74,717	2,340
4.	JSS Public School, Noida	85	36,136	31,483	42,493	1,331
5. 6.	JSS Medical College/ JSS Dental College, Mysuru	513	2,18,620	1,90,473	2,57,084	8,051
7.	JSS Pharmacy College, Mysuru	140	59,624	51,947	70,114	2,195
8.	JSS Public School, Mysuru	52	22,060	19,220	25,942	812
9.	JSS Boys Polytechnic, Mysuru	63	26,830	23,376	31,551	988
10.	JSS Polytechnic for Women, Mysuru	76	32,197	28,051	37,861	1,185
11.	SJCE Biotechnology, Mysuru	192	81,685	71,168	96,056	3,008
12.	SJCE Admin Block, Mysuru	119	50,518	44,013	59,405	1,860
13.	JSS PDA Academic Block, Mysuru	99	38,078	33,176	44,777	1,402
14.	JSS PDA Girls' Hostel	64	27,102	23,612	31,870	998
15.	JSS College, Ooty road, Mysuru	192	81,685	71,168	96,056	3,008
16.	JSS College, Nanjangud	31	13,249	11,543	15,580	488
17.	JSS Mangala Mantap, Nanjangud	31	13,249	11,543	15,580	488
18.	JSS Law College, Mysuru	57	24,692	21,513	29,037	909
19.	JSS Women's College Saraswathipuram, Mysuru	192	81685	71,168	96,056	3,008
20.	JSS Commercial Complex (Law College), Mysuru	31	13,249	11,543	15,580	488
21.	JSS College, Gundlupet	30	12,949	11,281	15,226	477
22.	JSS School, Suttur	36	15,658	13,642	18,413	576
23.	JSS Suttur Girls Hostel	20	8,732	7,608	10,269	321
24.	JSS Suttur Boys Hostel	47	20,175	17,578	23,725	743



Sl. No.	Name of the Institution	Carbon Dioxide Equivalent in Metric tons Per year	Petrol in liters consumed Equivalent Per year	Diesel in liters consumed Equivalent Per year	Coal burned in kgs Equivalent Per year	Carbon sequestered trees seedling grown for 10 years Equivalent In no's
25.	JSS Suttur Mangala Mantap	31	13,249	11,543	15,580	488
26.	JSS Dasoha Bhavan, Suttur	20	8,732	7,608	10,269	321
27.	JSS ITI, Mariyala	51	8,732	55,358	74,717	2,340
28.	JSS ITI, Thandya	20	21,982	19,152	25,850	810
29.	GINSERV, Bengaluru	35	14,755	12,855	17,351	543
<b>Grand Total</b>		<b>11,010</b>	<b>14,40,078</b>	<b>12,54,667</b>	<b>16,93,442</b>	<b>53,029</b>



JSS Institutions come under the following categories under HT & LT consumers.

\* The calculation is limited to one lakh units for aided/unaided colleges & two lakhs units for commercial units.

Category	Supplier Credit Period	Non Supplier Credit Period
	Savings/unit in Rs.	Savings/unit in Rs.
Commercial	3.66	9.86
*Aided	2.06	7.81
Unaided	2.48	8.68

## S RTP Brochure Installation Data

Sl. No.	Name of the Institution	Capacity Solar Grid Kw	Expected generation of power in units per year	Expected Savings Rs. in Lakhs/ Per year	Suppliers Credit period Expected savings Rs. in crores (15 years)	Non Suppliers Credit period Expected Savings Rs. in crores (10 years)	Total Expected savings Rs. in crores (25 years)
1.	JSS Hospital, Mysuru	800	12,00,000	26.30	3.94	9.53	13.47
2.	JSSATE Noida 23 acres plot	154.1	2,31,000	5.73	0.85	2.0	2.86
3.	JSSATE Noida 5 acres plot	140.7	2,11,000	5.20	0.78	1.82	2.60
4.	JSS Public School, Noida	80	1,20,000	2.97	0.44	1.04	1.48
5.	JSS Medical College	264	3,96,000	9.47	7.42	3.40	4.82
6.	JSS Dental College, Mysuru	220	3,30,000	7.89	1.18	2.83	4.01
7.	JSS Pharmacy College, Mysuru	132	1,98,000	4.73	0.71	1.70	2.41
8.	JSS Public School, Mysuru	48.84	73,260	1.60	0.24	0.58	0.82
9.	JSS Polytechnic, Mysuru	59.4	89,100	1.95	0.29	0.70	1.0
10.	JSS Polytechnic for Women, Mysuru	71.28	1,06,920	2.34	0.35	0.84	1.20
11.	SJCE Biotechnology, Mysuru	180.84	2,71,260	5.94	0.89	2.15	3.04
12.	SJCE Admin Block, Mysuru	111.84	1,67,760	3.67	0.55	1.33	1.88
13.	JSS PDA Academic Block, Mysuru	84.3	2,16,450	4.74	0.71	0.72	1.43
14.	JSS PDA Girls Hostel, Mysuru	60.0	2,16,450	4.74	0.71	0.72	1.43
15.	JSS College, Ooty road, Mysuru	180.84	2,71,260	7.43	1.11	2.29	3.41
16.	JSS College, Nanjangud	29.43	44,145	1.19	0.17	0.39	0.57
17.	JSS Mangala Mantapa, Nanjangud	29.38	44,070	1.19	0.17	0.39	0.57
18.	JSS Law College, Mysuru	54.925	82,387.50	1.07	0.16	0.61	0.77



Sl. No.	Name of the Institution	Capacity Solar Grid Kw	Expected generation of power in units per year	Expected Savings Rs. in Lakhs/ Per year	Suppliers Credit period Expected savings Rs. in crores (15 years)	Non Suppliers Credit period Expected Savings Rs. in crores (10 years)	Total Expected savings Rs. in crores (25 years)
19.	JSS Women's College Saraswathipuram, Mysuru	180.84	2,71,260	4.73	0.71	2.02	2.73
20.	JSS Commercial Complex (Law College), Mysuru	29.44	44,160	0.57	0.08	0.33	0.41
21.	JSS College, Gundlupet	29.25	43,875	1.13	0.16	0.38	0.55
22.	JSS School, Suttur	34.98	52,470	1.20	0.18	0.45	0.63
23.	JSS Suttur Girls Hostel	19.80	29,700	0.68	0.10	0.25	0.35
24.	JSS Suttur Boys Hostel	44.88	67,320	1.54	0.23	0.57	0.81
25.	JSS Suttur Mangala Mantapa	29.38	44,070	1.01	0.15	0.37	0.53
26.	JSS Dasoha Bhavana, Suttur	19.80	29,700	0.68	0.10	0.25	0.35
27.	JSS ITI, Thandya	19.80	29700	1.61	0.2418	0.6217	0.8635
28.	JSS RUDSETI, Mariyala	48.75	73,125	0.68	0.89	0.2534	0.3578
29.	GINSERV, Bengaluru	33	49,500	4.71	-	-	1.17
<b>Grand Total</b>		<b>3191.79</b>	<b>47.88</b>	<b>111</b>	<b>16.8</b>	<b>37.80</b>	<b>55.09</b>



All the firms have entered into PPA (Power Purchase Agreement) with the management for putting up SRTP installations. The execution of the projects is completed. The capacities implemented for different institutions are as under:

	Capacity of SRTP installation in Kws	Name of the Institute assigned
<b>M/S Sangam Rooftop Solar Pvt. Ltd., Mumbai</b>	19.80	1. JSS ITI, Thandya, Nanjangud
	19.80	2. Dasoha Bhavana & Math, Suttur
	29.38	3. JSS Siddananja Deshikendra Mangala Mantapa, Suttur
	19.80	4. Akkamahadevi Girls Hostel, Suttur
	29.44	5. Commercial Complex of JSS Law College Premises, Mysuru
	29.38	6. JSS Anubhava Mantapa, Nanjangud
	29.43	7. JSS College, Nanjangud
	29.25	8. JSS College, Gundlupet
	44.88	9. Basaveshwara Boys Hostel, Suttur
	34.98	10. JSS School, Suttur
	48.75	11. JSS RUDSETI, Mariyala
	54.92	12. JSS Law College, Commercial Complex, Mysuru
	180.84	13. JSS College, Ooty Road, Mysuru
	616.5	14. JSS Technical Institutions Campus, Mysuru
	180.84	15. JSS Women's College, Saraswathipuram, Mysuru
<b>Total</b>	<b>1367.99</b>	



<b>M/s Clean Max Environ Energy Solutions Pvt. Ltd., Mumbai</b>	154.1	1. JSS ATE 23 Acres Plot, Noida
	140.7	2. JSS ATE, 5 Acres Plot, Noida, New Delhi
	80	3. JSS Public School, Noida, New Delhi
	264	4. JSS Medical College, Mysuru
	220	5. JSS Dental College, Mysuru
	132	6. JSS Pharmacy College, Mysuru
<b>Total</b>	<b>990.8</b>	



	Capacity of SRTP installation in Kws	Name of the Institute assigned
M/s Mytrah Energy (India) Pvt. Ltd., Hyderabad	800	JSS Hospital, Mysuru
<b>Total</b>	<b>800</b>	
<b>Sunny Portal</b>	33	GINSERV, Bengaluru
<b>Grand Total (in MWs)</b>	<b>3.191</b>	
Approximate investment for SRTP installation 3.191 MW x Rs. 5 crores per MW = Rs. 15.95 crores		

