

ADMISSION BROCHURE



2023-24

Content

Vice- Chancellor's Message

About JSS Academy of Higher Education & Research, Mysuru

Vission & Mission of JSS AHER

About JSS Medical College, Mysuru

About JSS Dental College & Hospital, Mysuru

About JSS College of Pharmacy, Mysuru & Ooty

About JSS School of Life Sciences, Mysuru

About JSS School of Life Sciences, Ooty

Courses @ JSS AHER

JSS AHER - Admission Policy 2023-24

Ban on Ragging

Campus Facilities

About Mysuru



Dear Prospective Students,

As the Vice Chancellor of JSS Academy of Higher Education & Research (JSS AHER), it is my great pleasure to extend my warmest greetings to you. As we embark on the admissions process for the academic session 2023-24, I am absolutely thrilled to extend an invitation to you to join our esteemed institution.

Since its establishment in 2008, JSS AHER has remained dedicated to serving the needs of our community and pursuing excellence in the higher education sector. Our journey has been defined by innovation, passion, and an unwavering commitment to delivering high-quality education, research, and outreach.

At JSS AHER, we are dedicated to nurturing holistic development and empowering students to acquire academic knowledge and essential skills and competencies essential for success in the 21st century. Our interdisciplinary approach fosters a dynamic learning environment where students are encouraged to explore, innovate, and transform challenges into opportunities.

Offering over 150 programs across various disciplines, including Medicine, Dentistry, Pharmacy, Life Sciences, Management Studies, Biomedical Sciences, and Yoga, we provide a comprehensive educational experience that is centered on the learner and globally relevant. Our state-of-the-art infrastructure, devoted faculty, and extensive international partnerships guarantee that our students receive a first-class education that prepares them to excel in their chosen fields.

Moreover, our commitment to accessibility and inclusivity is evident in our generous financial aid program, which ensures that students from all backgrounds can access high-quality education at JSS AHER.

As you deliberate on your academic journey, I invite you to become part of our vibrant community of scholars, researchers, and changemakers who are shaping the future of healthcare, science, and technology. Together, let's embark on a transformative educational journey that will enrich your life and enable you to make a positive impact on the world.

I eagerly anticipate the opportunity to welcome you to JSS AHER and support you in achieving your aspirations and dreams.

Best Wishes,

Dr. Surinder Singh

Vice Chancellor

JSS Academy of Higher Education & Research, Mysuru

JSS Academy of Higher Education & Research, Mysuru (JSS AHER)

JSS Academy of Higher Education & Research (JSS AHER), Mysuru, Karnataka (Formerly known as Jagadguru Sri Shivarathreshwara University (JSSU)), is a Deemed to be University located in Mysuru, Karnataka. It was established in 2008 under Section 3 of the UGC Act 1956.

JSS Academy of Higher Education & Research aspires to become a world class center for excellence in education and research with a special focus to serve the under privileged and economically challenged sections of the society. The campus is modeled as a fully residential educational campus in line with the best institutions of higher learning across the globe. The uniqueness of its reputation is acknowledged through the format, content, and pedagogy of its programmes and their relevance to the society. The University is recognized by the University Grants Commission under UGC Act and is a member of the Association of Indian Universities (AIU). It is also Accredited 'A+' Grade by NAAC.

JSS Academy of Higher Education & Research (JSS AHER) comprises of:

JSS AHER Constituent - Colleges

- JSS Medical College, Mysuru.
- JSS Dental College & Hospital, Mysuru.
- JSS College of Pharmacy, Mysuru and
- JSS College of Pharmacy, Ooty (Tamil Nadu)

JSS AHER - Schools:

- School of Life Sciences, Mysuru
- School of Life Sciences, Ooty (Tamil Nadu)

JSS AHER - Departments:

- Department of Water & Health
- Department of Environmental Science
- Department of Nutrition & Dietetics
- Department of Microbiology
- Department of Biotechnology & Bioinformatics
- Department of Health System Management studies
- Department of Yoga

Learning Centers:

- Center for Online Education

Vision, Mission of JSS AHER

Vision

- “To be a globally recognized center of excellence in career guidance, skill development, and industry collaboration, empowering students to achieve their professional aspirations and contribute positively to society.”

Mission

- Sustain the momentum of success achieved in previous years, inspire students to aim higher and pursue their dreams with confidence, and strengthen partnerships with industry leaders to create diverse opportunities for career advancement and holistic development of students.

JSS Medical College, Mysuru

JSS Medical College is in a sprawling 43-acre campus in Sri Shivarathreeshwara Nagara, Mysuru City, which is about 140 Km from Bangalore. The city is famed for its educational institutions, salubrious climate, and beautiful gardens. The college which was started in 1984 has been designed and equipped for dispensation of quality medical education. The institution is backed by highly qualified and experienced staff, well equipped laboratories, library, and modern teaching aids.

Since its inception in 1984, JSS Medical College has been dedicated to serving society as a center of excellence with emphasis on socially meaningful medical education, research, and health care. The college has emerged as a pioneer in the state of Karnataka by providing medical and health care programs through internationalization, innovation in academic and research studies.

The college offers undergraduate courses in medicine (MBBS) and postgraduate degree (MD/MS) and Diploma programs in 23 medical disciplines along with 4 Super specialty courses in various disciplines. The sanctioned annual intake to the MBBS program is 200. The college is also conducting B.Sc (Allied Health Sciences), Bachelor of Occupational Therapy (BOT), M.Sc (Medical/Biomedical) and Masters in Public Health (MPH) programs in various disciplines, M.Phil in Clinical Psychology. The courses offered are a perfect blend of community oriented, problem-based learning with high quality clinical reasoning.

The graduate and postgraduate programs of the college are recognized by the statutory bodies. The courses offered are also recognized by General Medical Council (UK), Sri Lanka Medical Council and WHO. The college has been recognized by the Royal College of Obstetrics and Gynecology, UK for the award of MRCOG. The college is also recognized by the Malaysia Medical Council.

Library & Information Centre

The central library is spread over an area of 14,167 Sq. ft. and also JSS Hospital has a separate library of its own. The library is equipped with medical and allied text books, reference books, encyclopedia, dictionaries, technical reports, monographs, thesis and dissertation works, foreign and Indian medical journals of repute, as well as general reading material. The library also has an impressive collection of CD ROMs and databases. A digital library with internet workstations is established.

Research

Research is being carried out in all departments, both in the clinical and basic sciences, both in National and International funded projects. The staff and students are actively involved in Clinical and Research activities, including publication of papers in reputed professional journals. Depression Brain Bank, a unique project is actively functioning. JSS Body Donation Association registers and receives donations of bodies.

JSS Hospital, Mysuru

The students of Biomedical Sciences & Bachelor of Occupational Therapy (BOT) will have the advantage of getting their hands on experience wherever applicable at JSS Hospital, Mysuru. JSS Hospital is an 1800 bedded teaching and service-oriented hospital, attached to JSS Medical College (JSS MC). It also has one of the biggest critical and emergency care facilities with 260 beds and is one of the renowned high tech tertiary care referral hospitals in South India having to its credit several super specialties and latest advanced equipment. This hospital has additional supporting paramedical training facilities in the form of College of Nursing, College of Physiotherapy and School of Nursing. Quality health care is given free of cost for the poorer section of society.

The hospital has 32 departments in various specialties. Since this is a teaching hospital, it provides services to patients through highly qualified doctors specialized in various fields. There are 25 major operation theatres in addition to 9 minor operation theatres, well equipped with modern and sophisticated equipments, besides Intensive Care Units, such as N.I.C.U., ICCU services and multi-disciplinary ICU like: Surgical ICU, Isolation ICU, Pediatric ICU, Neonatal ICU, Cardiac ICU, Respiratory ICU, Transplant ICU and Cardiothoracic ICU. The Hospital has its own Oxygen Plant with pipeline connections to O.T., various wards and departments. The hospital also has round-the-clock emergency services.

The drug center in hospital premises works round the clock and supplies drugs to patients at rates cheaper than those in the market.

For more details about the hospital please visit its website: www.jsshospital.in.

JSS Dental College & Hospital

JSS Dental College & Hospital, Mysuru has committed itself to becoming a center for excellence in Dental Education and a world leader in the field of Dental Sciences including hospital practice with the objective of strengthening the health care of the country. JSS Dental College and Hospital is in the city of Mysuru, Karnataka State, South India. Mysuru is known for its palaces and gardens and is about 150 km from Bengaluru. Easily reachable both by roads and railways. The Dental College was established in 1986-87 and is at present conducting BDS, MDS courses in Nine special divisions, PhD in Dentistry, and a Diploma in Dental Mechatronics.

The College is recognized by both the Dental Council of India and the Government of India. It is affiliated to the JSS Academy of Higher Education & Research (JSSAHER), Mysuru from 2008-09. Earlier it was affiliated to the Rajiv Gandhi University of Health Sciences, Karnataka, from 1996-97 and it was affiliated to the University of Mysore from 1986-87. The college is located in a JSS Medical Institutions Campus spread across over 38 acres. 5 acres of the total land is exclusively demarcated for the Dental College & Hospital. Separate hostel facilities are provided for both male and female students.

JSS College of Pharmacy, Mysuru & Ooty

JSS College of Pharmacy, Mysuru

JSS College of Pharmacy, Mysuru, Karnataka was established in 1973 and has an academic heritage as pioneering pharmacy institution in India. The pharmacy education we provide is recognized by Pharmacy Council of India (PCI), New Delhi, and by the All India Council for Technical Education (AICTE), New Delhi, and also accredited by the National Board of Accreditation (NBA) for B. Pharm program. JSS College of Pharmacy, Mysuru has been ranked 7th in India according to the ranking for the pharmacy colleges in India given by NIRF – 2023 (National Institutional Ranking Framework (NIRF), by MHRD, Govt. of India).

JSS College of Pharmacy, Ooty (Tamil Nadu)

JSS College of Pharmacy, Ooty (TN) was established in 1980 with a view to provide job oriented professional courses in Pharmacy. The pharmacy education we provide is recognized by Pharmacy Council of India (PCI), New Delhi, and by the All India Council for Technical Education (AICTE), New Delhi, and also accredited by the National Board of Accreditation (NBA) for B. Pharma program. The infrastructure available makes the college a conducive place for academic learning that provides students with quality education in a clean & comfortable environment. JSS College of Pharmacy, Ooty has been ranked 4th among Pharmacy Colleges in India for 2023 by NIRF (National Institutional Ranking Framework (NIRF), by MHRD, Govt. of India).

Approvals and Accreditations

- NABL Accredited Drug Testing Laboratory
- ACPE Certified Pharm. D. Program
- MHRD & AICTE recognized "Institution Invention cell"

The first ever institution not only in the country and also in the Asia Pacific Region to get the International Certification for the Pharm. D. Program from Accreditation Council for Pharmacy Education (ACPE), USA.

School of Life Sciences, Mysuru Campus

The School of Life Sciences (SLS), Mysuru was established in the year 2013. The School stands today as a unique institution in the country known for multidisciplinary and interdisciplinary teaching and research in life sciences.

Since its inception, the Faculty of Life Sciences has seen an exponential growth in a short span of time due to the unique programs, which are being offered, keeping in mind the problems of the society. The programs are designed to address the issues of the society. The School stand today as a unique institution in the country known for multidisciplinary and interdisciplinary teaching and research in life sciences.

Situated within a serene environment, the Faculty of Life Sciences hosts undergraduate, postgraduate and research programs catering the educational needs of both national and international students under the Choice Based Credit System (CBCS) pattern in line with the **National Education Policy 2020**, which provides a greater flexibility for the students to enhance their learning experience in the respective programs. One of the unique features of school of life sciences is its collaboration with medical, dental and pharmacy faculties for interdisciplinary teaching and research. Such a close association has widened the areas of research and innovation giving students a greater advantage of understanding life better and addressing some of the complex issues through an inter-disciplinary approach. Students are also exposed to the realm of science & technology through internships and projects in various nationally renowned research institutes and industries. Entrepreneurship programs, personality development, value added programs and extension programs, which are offered, as extra-curricular activities not only make them industry ready but also responsible citizens of the future.

Faculty of Life Sciences currently hosts five Departments namely Department of Water & Health, Department of Nutrition & Dietetics, Department of Biotechnology & Bioinformatics, Department of Environmental Sciences, Department of Microbiology and eight Divisions namely Cognitive Neuroscience & Psychology, Biochemistry, Geoinformatics, Languages, Medical Statistics, Medical Physics, Molecular Biology and Nanoscience & Technology. Sixty full time well-qualified faculty members are continuously engaged in training more than 2000 students that strengthen the institute. The institute efficiently supports research activities among the scholars leading to quality Doctoral degrees in all the above-mentioned fields.

The School welcomes students from every corner of the world, who are eager to learn and make knowledge work at elementary level and understand mysteries in Life Sciences.

School of Life Sciences, Ooty (Off-Campus)

The School of Life Sciences at Ooty Campus offers an outstanding and diverse portfolio of undergraduate and postgraduate programmes. In recent decades, great strides have been made in understanding important biological processes, particularly those at the molecular, cellular, and ecosystem levels. The Life Sciences degree programmes aims to diversely train its students, enabling graduates to pursue careers or advanced degrees in life and health sciences, research, education, industry, or governmental work.

Courses @ JSS AHER

Dental*

- Bachelor of Dental Surgery (BDS)

Fellowship

- Psychosexual Medicine
- Pain Medicine
- Neonatology
- Critical Care Medicine

B.Sc.

(Allied Health Sciences)

- Medical Laboratory Technology
- Medical Imaging Technology
- Anaesthesia & Operation Theatre Technology
- Renal Dialysis Technology
- Respiratory Care Technology
- Cardiac Care Technology
- Perfusion Technology
- Emergency Medicine Technology
- Optometry
- Physician Assistant (CTVS)
- Forensic Sciences
- Medical Genetics
- Bachelor of Occupational Therapy (BOT)

M.Sc. / MPH / M.Phil

(Biomedical / Medical Sciences)

- Medical Microbiology
- Medical Biochemistry
- Medical Physiology
- Medical Anatomy
- Medical Pharmacology
- Medical Genetics & Genomics
- Echocardiography
- Clinical Psychology
- Forensic Odontology
- Clinical Embryology
- Master of Public Health (MPH)
- M. Phil Psychiatric Social Work
- M. Phil Clinical Psychology

Ph.D.

Medicine / Dentistry / Pharmacy /
Management Studies / Life Sciences
/ Biomedical Sciences

Pharmacy

- B.Pharm
 - II B.Pharm (Lateral Entry)
 - D Pharm
 - B Pharm Practice
 - Pharm D
 - Pharm D (PB)
- #### M.Pharm
- Pharmaceutics
 - Pharmaceutical Quality Assurance
 - Regulatory Affairs
 - Industrial Pharmacy
 - Pharmacy Practice
 - Pharmacology
 - Pharmaceutical Chemistry
 - Pharmaceutical Analysis
 - Pharmacognosy
 - Pharmaceutical Biotechnology

***Note :** The Schedule for Entrance Test & Counselling is hosted at the Website.

M.Sc. Life Sciences

- Cognitive Neuroscience
 - Environmental Science
 - Geoinformatics
 - Nanoscience & Technology
 - Nutrition & Dietetics
 - Molecular Biology
 - Biochemistry
 - Microbiology
 - Medical Statistics
 - Bioinformatics
 - Cosmetic Science
 - Sports Nutrition & Management
 - Biotechnology
 - Medical Physics
- #### Diploma in
- Tissue Culture
 - Nutraceutical Technology
 - Environment, Health & Safety Management

Yoga

- B.Sc. in Yoga
- M.Sc. in Yoga
- Yoga Teachers Course (YTC) (3 months)

B.Sc. Life Sciences

General (3 Years) / Honours (4 Years)

- Biotechnology
- Microbiology
- Environmental Science
- Food, Nutrition & Dietetics
- Psychology
- Biochemistry

Dental Diploma

- Diploma in Dental Mechatronics
- DORA - Dental Operating Room Assistant

Health System Management Studies

- BBA in Hospital & Health System Management
- MBA in Hospital Administration
- MBA in Pharmacy Administration
- MBA in Information Technology

Open Distance Learning

- Diploma in Environment, Health & Safety Management
- Diploma in Tissue Culture
- Certificate Program in Statistical Methods & Research Methodology

Online Learning Programs

- MBA in Hospital Administration
- BBA in Hospital and Health System Management
- B.Sc in Psychology
- Certificate Programme in Dental
- Ethics & Jurisprudence

Diploma in

- Pharmacovigilance
- Quality Control
- Bioinformatics
- Regulatory Affairs
- Medical Devices

JSS AHER - Admission Policy 2023-24

The following is the admission policy and seat sharing policy for Undergraduate (UG) Post Graduate (PG) programs at the constituent colleges & Departments of JSS Academy of Higher Education & Research (JSS AHER) are approved by the Board of Management and are in compliance with the directions of JSS AHER authorities/ statutory bodies/ Hon'ble Supreme court directions.

JSS AHER Seat Sharing Policy

JSS AHER seat sharing policy governing admission of students to various courses.

SI No	Seat Sharing	Medical and Dental courses	Pharmacy and Othercourses
1	NEET based merit / JSS AHER Merit	85%	70%
2	NRI	15%	15%
3	Institutional preference	-	15%

UG & PG - Admission Policy 2023-24

SI No	Course	Admission Policy
1	PG Medical Super Speciality (DM/M.Ch)	<p>As directed by Government of India, Ministry of Health and Family Welfare, New Delhi, the National Board of Examination (NBE) conducts the National Eligibility-cum-Entrance (NEET –SS) for admission to Super Speciality programmes (DM/M.Ch) in terms of section (10) of the Indian Medical Council Act, 1956 as amended in 2016, from the Academic Year 2017.</p> <p>Government of India, Ministry of Health and Family Welfare letter no. V.26012/02/2016-MEP(Pt) dated May 4th, 2017 had directed and informed all the Institutions, Universities & State Govt., that there shall be one common counselling for all seats at National level and will be conducted by Directorate General of Health Services (DGHS).</p> <p>Admission / Reporting at JSS Medical College, Mysuru will be done based on the guidelines & schedule of MCC of DGHS, issued from time to time and fee policy is as per JSS AHER.</p>
2	PG Medical (MD/MS/ Diploma) & PG Dental (MDS)	<p>As per the directions of Hon'ble Supreme Court of India, the National Board of Examination (NBE) conducts the National Eligibility-cum-Entrance Test (NEET-PG) for admission to Post Graduate MD/MS/PG Diploma/MDS Courses in terms of Section (10) of the Indian Medical Council Act, 1956 as amended in 2016.</p> <p>In compliance of the order of the Hon'ble Supreme Court of India dated 23/03/2012 passed in I.A No. 16/2012 in Civil Appeal No. 1944 of 1993 - Anand S.Biji Vs State of Kerala & Others and in order to comply as per the directions of the Hon'ble Supreme Court of India dated 09/5/2017 passed in Writ Petition© No.267 of 2017 –Dar-Us-Slam Educational Trust & Ors Vs MCI & Ors; Directorate General of Health Services, Ministry of Health & Family Welfare has been entrusted the responsibility to hold online common counselling for All India Quota seats (including NRI quota) for admission to Post-Graduate Medical and Dental courses.</p> <p>Admission / Reporting at JSS Medical college, Mysuru will be done based on the guidelines & Schedule of MCC of DGHS, issued from time to time and fee policy is as per JSS AHER.</p>

<p>3</p>	<p>UG Medical (MBBS) & UG Dental (BDS)</p>	<p>As per the directions of Hon'ble Supreme Court of India and regulations framed under the Indian Medical Council Act-1956 as amended in 2016 and the Dentists Act-1948 as amended in 2016, National Testing Agency (NTA) conducts the National Eligibility-cum-Entrance Test–(NEET - UG) for admission to Undergraduate Medical (MBBS) & Dental (BDS) Courses.</p> <p>In compliance of Hon'ble Supreme Court's directions in WP 267 of 2017 DAR-US-SALAM EDUCATIONAL TRUST AND ORS Petitioner(s) VERSUS MEDICAL COUNCIL OF INDIA AND ORS, the court has directed that Common Counselling for admission to All India Quota seats in Government Medical Colleges shall be conducted by the DGHS. The counselling conducted by DGHS will also include Deemed-to be-Universities as they have an All India character. The Deemed-to be-Universities also includes Deemed-to be-Universities run by religious and linguistic minorities.</p> <p>Admission/Reporting at JSS Medical college/JSS Dental College, Mysuru will be done based on the guidelines & Schedule of MCC of DGHS, issued from time to time and fee policy of JSS AHER.</p>
<p>4</p>	<p>Fellowship in Medical Courses</p>	<p>Eligibility: The candidate must have a MBBS degree in the relevant subject.</p> <ul style="list-style-type: none"> • Admission notification will be released through print media and in the JSS AHER website. • JSS AHER calendar of events is drawn based on the PG results. • The applications will be invited from eligible candidates. • The seats are allotted as per the inter-se merit in the qualifying degree.
<p>5</p>	<p>M.Phil in 1) Clinical Psychology 2) Rehabilitation Psychology</p>	<p>Eligibility: As per RCI, MA/M.Sc. in Psychology from a recognized University by the UGC with minimum 55% marks in the aggregate. (50% marks in case of SC/ST/OBC candidate).</p> <ul style="list-style-type: none"> • With the approval of the authorities and as per the norms of RCI, JSS AHER will conduct All India Entrance Test & viva for preparation of Merit list for allotment of seats. Accordingly, JSS AHER will constitute the counselling committee to conduct the entrance exam and viva for preparation of merit list and allotment of seats. • Admission notification will be released through print media and in the JSS AHER website. • JSS AHER calendar of events is drawn based on the PG results. • The applications will be invited from eligible candidates. • The seats are allotted based on the Merit of JSS AHER Entrance Test & Viva.
<p>6</p>	<p>Master's in Public Health (MPH)</p>	<p>Eligibility: Candidates should have a Bachelor's degree in Medicine, Dentistry, Nursing, Allied Health and Life Sciences from a recognized university.</p> <ul style="list-style-type: none"> • Admission notification will be released through print media and in the JSS AHER website. • JSS AHER calendar of events is drawn based on the PG results. • The applications will be invited from eligible candidates. • The seats are allotted as per the inter-se merit in the qualifying degree.

7	M.Sc (Biomedical Sciences)	<p>Eligibility: Candidates should have passed B.Sc with at least one subject of Biological Sciences or BAMS or MBBS or BHMS or BPT or B.Pharm or any other professional graduates from a recognized University.</p> <ul style="list-style-type: none"> • Admission notification will be released through print media and in the JSS AHER website. • JSS AHER calendar of events is drawn based on the UG results. • The applications will be invited from eligible candidates. • The seats are allotted as per the inter-se merit in the qualifying degree.
8	B.Sc (Biomedical Sciences)	<p>Eligibility: Pass in 10+2, A Level, IB, American 12th grade or equivalent with Physics, Chemistry, Biology and English or any equivalent examination recognized by the JSS AHER</p> <ul style="list-style-type: none"> • The candidate should have completed 17 years of age on or before 31st December of admission year. • Admission notification will be released through print media and in the JSS AHER website. • JSS AHER calendar of events is drawn based on the 10+2 results. • The applications will be invited from eligible candidates. • The seats are allotted as per the inter-se merit in 10+2.
9	Diploma in Dental Mechatronics	<p>Eligibility: Pass in 10th examination with Physics as a subject from a recognized Board or University.</p> <ul style="list-style-type: none"> • ITI /Diploma /Any other qualification approved by the recognized Board or University as equivalent to any of the above examination. • The candidate should have completed 17 years of age on or before 31st December of admission year. • Admission notification will be released through print media and in the JSS AHER website. • JSS AHER calendar of events is drawn based on the 10th standard results. • The applications will be invited from eligible candidates. • The seats are allotted as per the inter-se merit in the qualifying Exam.

<p>10</p>	<p>PG – M.Pharm / Pharm-D(PB)</p>	<p>Eligibility (M.Pharm): A candidate who has passed B. Pharm degree examination from any recognized University or relevant degree courses in pharmacy recognized as equivalent by Pharmacy Council of India (PCI) and/or All India Council of Technical Education (A.I.C.T.E) for this purpose and who has secured not less than 50% of the minimum marks (aggregate of four years) prescribed for the qualification examination shall be eligible for the admission to the M.Pharm course.</p> <p>Eligibility (Pharm-D (PB)): Pass in B. Pharm from the recognized University and approved by Pharmacy Council of India, New Delhi</p> <ul style="list-style-type: none"> • As per Schedule for completion of admission process, JSS AHER will release the admission notification through print media and in the JSS AHER website. • JSS AHER - entrance exam for M. Pharm / Pharm- D(PB) programme will be conducted at Mysuru and Ooty centres for the preparation of rank list. • JSS AHER entrance test & admission calendar of events is drawn based on the PCI/AICTE and JSS AHER guidelines. • The applications will be invited from eligible candidates. • The entrance test will be conducted as per schedule announced. • The rank list will be uploaded in the JSS AHER website as per schedule. • The counselling will be conducted as per JSS AHER calendar of events. • The seats are allotted as per the rank through counselling. • JSS AHER will constitute counselling / selection committee for scrutiny of the application, preparation of rank list, authentication and verification of original documents, allotment of seats and other process related to counselling and admissions.
<p>11</p>	<p>B.Pharm /Pharm-D</p>	<p>Eligibility: Candidate shall have passed 10+2 examination conducted by the respective state/central government authorities recognized as equivalent to 10+2 examination by the Association of Indian Universities (AIU) with English as one of the subjects and Physics, Chemistry, Mathematics/Biology as optional subjects individually. "However, the students possessing 10+2 qualification from non-formal and non-classrooms-based schooling such as National Institute of Open Schooling, open school systems of States etc. shall not be eligible for admission to B. Pharm Course." The candidate should be 17 years of age on or before 31st December of the admission year.</p> <ul style="list-style-type: none"> • As per Schedule for completion of admission process, JSS AHER will release the admission notification through print media and in the JSS AHER website. • JSS AHER entrance exam for UG Pharmacy program will be conducted at Mysuru and Ooty centers only for preparation of rank list. • JSS AHER entrance test & admission calendar of events is drawn based on PCI/AICTE and JSS AHER guidelines. • The applications will be invited from eligible candidates. • The entrance test will be conducted as per the schedule announced. • The rank list will be uploaded on JSS AHER website as per schedule.

11	B.Pharm /Pharm-D	<ul style="list-style-type: none"> • The counseling will be conducted as per JSS AHER calendar of events. • The seats are allotted as per the rank list through counseling. • JSS AHER constitutes counseling / selection committee for scrutiny of the application, preparation of rank list, authentication and verification of original documents, allotment of seats and other process related to counseling and admissions.
12	MBA in 1) Hospital Administration 2) Pharmacy Administration 3) Information Technology	<p>Eligibility: A bachelor's degree in any discipline or an equivalent qualification with minimum of 50% marks aggregate. (In case of SC, ST and OBC Candidate the minimum should be 40% marks aggregate)</p> <ul style="list-style-type: none"> • Admission notification will be released through print media and in the JSS AHER website. • JSS AHER calendar of events is drawn based on the UG results. • The applications will be invited from eligible candidates. • The seats are allotted as per the inter-se merit in the qualifying degree.
13	BBA in Hospital & Health System Management	<p>Eligibility: The candidate seeking admission to this course should have passed the Higher Secondary Certificate Examination 10+2 / PUC II / HSC or the Indian School Certificate Examination (ISCE) or any other examination equivalent to 10+2/ HSC examination of any recognized Board / University from any School / Colleges in India / Abroad after 12 years of study. OR Pre-Degree course from a recognized University considered as equivalent by JSS AHER, (Two years after ten years of schooling)</p> <ul style="list-style-type: none"> • Admission notification will be released through print media and in the JSS AHER website. • JSS AHER calendar of events is drawn based on the 10+2 results. • The applications will be invited from eligible candidates. • The seats are allotted as per the inter-se merit in the qualifying Exam.
14	B.Sc – Life Sciences	<p>Eligibility: Candidate should have passed the Higher Secondary Certificate Examination 10+2 / PUC II / HSC or the Indian School Certificate Examination (ISCE) or any other examination equivalent to 10+2/HSC examination of any recognized Board/University from any School / Colleges in India / Abroad after 12 years of study. The last two years of study shall comprise of Physics, Chemistry & Biology (PCB)</p> <ul style="list-style-type: none"> • Age: The candidate should complete 17 years of age on or before 31st December of the admission year. • Admission notification will be released through print media and in the JSS AHER website. • JSS AHER calendar of events is drawn based on the 10+2 results. • The applications will be invited from eligible candidates. • The seats are allotted as per the inter-se merit in the qualifying Exam.

15	M.Sc - Life Sciences	<p>Eligibility: Candidate should have passed B.Sc / B.E / B.Tech /B.Sc Agriculture / Horticulture / B.FSc. / MBBS from any statutory University.</p> <ul style="list-style-type: none"> • Admission notification will be released through print media and in the JSS AHER website. • JSS AHER calendar of events is drawn based on the UG results. • The applications shall be invited from eligible candidates. • The seats are allotted as per the inter-se merit in the qualifying degree.
16	Diploma - <ul style="list-style-type: none"> • Tissue Culture • Nutraceutical Technology • Environment, Health & Safety Management 	<p>Eligibility: Candidates should have a bachelor's degree in science subject and recognized by UGC with Biology as one subject or its equivalence.</p> <ul style="list-style-type: none"> • Admission notification will be released through print media and in the JSS AHER website. • JSS AHER calendar of events is drawn based on the UG results. • The applications will be invited from eligible candidates. • The seats are allotted as per the inter-se merit in the qualifying degree.
17	B.Sc in Yoga	<p>Eligibility: Candidate for admission to B.Sc. in Yoga degree programme shall have passed the Higher Secondary Education/II PUC/10+2/any equivalent qualification as prescribed by UGC and other examinations accepted as equivalent there by Board of Management of JSS Academy of Higher Education & Research.</p> <ul style="list-style-type: none"> • Admission notification will be released through print media and in the JSS AHER website. • JSS AHER calendar of events is drawn based on the 10+2 results. • The applications will be invited from eligible candidates. • The seats are allotted as per the inter-se merit in the qualifying Exam.
18	M.Sc in Yoga	<p>Eligibility: Candidate shall have passed B. Sc (Yoga) or other degree*-B.Sc in Science (Any Stream) /BPT / Medicine / Dental / BNYS/BAMS/BUMS. For candidates other than B. Sc (Yoga) degree & BNYS degree should enroll for Compulsory Bridge Course – Yoga Teachers Course (Level 2) (YTC-2) (Certificate Programme).</p> <ul style="list-style-type: none"> • Admission notification will be released through print media and in the JSS AHER website. • JSS AHER calendar of events is drawn based on the UG results. • The applications will be invited from eligible candidates. • The seats are allotted as per the inter-se merit in the qualifying degree.
19	Yoga Teachers Course (YTC)	<p>Eligibility: As per approval of the course, it is a Three (3) months course with the eligibility of SSLC/10th passed. There is no age limit for this course.</p> <ul style="list-style-type: none"> • Admission notification will be released through print media and in the JSS AHER website. • JSS AHER calendar of events is drawn based on the 10th/SSLC results. • The applications will be invited from eligible candidates. • The seats are allotted as per the inter-se merit in the qualifying Exam.

20	B.Sc Psychology (Online mode)	<p>Eligibility: Learners who have finished their PUC/10+2 or any equivalent course with Biological Science and Arts background from recognized colleges/University.</p> <ul style="list-style-type: none"> • Admission notification will be released through print media and in the JSS AHER website. • The 2 sessions shall be conducted every year (January & July) • JSS AHER calendar of events is drawn based on the 10+2 results. • The applications will be invited from eligible candidates. • The seats are allotted as per the inter-se merit in the qualifying Exam.
21	MBA- Hospital Administration (Online Mode)	<p>Eligibility: Any undergraduate having finished 3 years degree recognized by the UGC or its equivalence are eligible.</p> <ul style="list-style-type: none"> • Admission notification will be released through print media and in the JSS AHER website. • The 2 sessions shall be conducted every year (January & July) • JSS AHER calendar of events is drawn based on the UG results. • The applications will be invited from eligible candidates. • The seats are allotted as per the inter-se merit in the qualifying degree.
22	BBA-Hospital Health System Management (Online Mode)	<p>Eligibility: Learners who have finished their PUC/10+2 or any equivalent course with Biological Science and Arts background from recognized colleges/university.</p> <ul style="list-style-type: none"> • Admission notification will be released through print media and in the JSS AHER website. • The 2 sessions shall be conducted every year (January & July) • JSS AHER calendar of events is drawn based on the 10+2 results. • The applications will be invited from eligible candidates. • The seats are allotted as per the inter-se merit in the qualifying exam.
23	Diploma in Pharmacovigilance (Online mode)	<p>Eligibility: Bachelors and/or Honors Degree in any disciplines-Medicine, Dentistry, Pharmacy, Veterinary Science, Nursing, and Biosciences. Learners with Equivalent Degree in Allied Health Sciences also can apply for this course.</p> <ul style="list-style-type: none"> • Admission notification will be released through print media and in the JSS AHER website. • The 2 sessions shall be conducted every year (January & July) • JSS AHER calendar of events is drawn based on the UG results. • The applications will be invited from eligible candidates. • The seats are allotted as per the inter-se merit in the qualifying degree.
24	Diploma in Pharmaceutical Quality Control (Online mode)	<p>Eligibility: Any graduate in science (B.Sc. / BE / B.Tech / MBBS / BDS / B.Pharm / M.Pharm) from any recognized Institution / University. Industry Professionals like Working Chemists, Executives, Managers, Group Leaders, Heads of QA / QC / Production in Pharmaceutical Industry or Academicians are also eligible to apply for this course.</p> <ul style="list-style-type: none"> • Admission notification will be released through print media and in the JSS AHER website. • The 2 sessions shall be conducted every year (January & July) • JSS AHER calendar of events is drawn based on the UG results. • The applications will be invited from eligible candidates. • The seats are allotted as per the inter-se merit in the qualifying degree

25	Diploma in Bioinformatics (online mode)	<p>Eligibility: A candidate who has passed B.Pharm, MBBS, BDS, BAMS and B.Sc. (with Biology as one of the subjects) degree examination of any recognized University.</p> <ul style="list-style-type: none"> • Admission notification will be released through print media and in the JSS AHER website. • The 2 sessions shall be conducted every year (January & July) • JSS AHER calendar of events is drawn based on the UG results. • The applications will be invited from eligible candidates. • The seats are allotted as per the inter-se merit in the qualifying degree.
26	Diploma in Regulatory Affairs (online mode)	<p>Eligibility: Any graduate pursuing in the field of Pharmaceutical Sciences, Medical Sciences, Veterinary Sciences, Biotechnology, Microbiology and Life Sciences from any recognized institution</p> <ul style="list-style-type: none"> • Admission notification will be released through print media and in the JSS AHER website. • The 2 session shall be conducted every year (January & July) • JSS AHER calendar of events is drawn based on the UG results • The applications will be invited from eligible candidates • The seats are allotted as per the inter-se merit in the qualifying degree
27	Diploma in Medical Devices (online mode)	<p>Eligibility: Any graduate pursuing in the field of Pharmaceutical Sciences, Medical Sciences, Veterinary Sciences, Biotechnology, Microbiology and Life Sciences from any recognized institution.</p> <ul style="list-style-type: none"> • Admission notification will be released through print media and in the JSS AHER website. • The 2 sessions Shall be conducted every year (January & July) • JSS AHER calendar of events is drawn based on the UG results. • The applications will be invited from eligible candidates. • The seats are allotted as per the inter-se merit in the qualifying degree.
28	Certificate Programme in Dental Ethics & Jurisprudence (online mode)	<p>Eligibility: Student who has enrolled 3rd year BDS onwards & all dental graduates are eligible.</p> <ul style="list-style-type: none"> • Admission notification will be released through print media and in the JSS AHER website. • The 2 sessions shall be conducted every year (January & July) • JSS AHER calendar of events is drawn based on the UG results. • The applications will be invited from eligible candidates. • The seats are allotted as per the inter-se merit in the qualifying degree.
29	Doctor of Philosophy (Ph.D.)	<p>Eligibility: Candidates for admission to the Ph.D. program shall have a Master's Degree or a Professional Degree declared equivalent to the Master's Degree by the corresponding statutory regulatory body, with at least 55% marks in aggregate or its equivalent grade 'B' in the UGC 7-point scale (or an equivalent grade in a point scale wherever grading system is followed) or an equivalent degree from a Foreign Educational Institution accredited by an Assessment and Accreditation Agency which is approved, recognized or authorized by an authority, established or incorporated under a law in its home country or any other statutory authority in that country for the purpose of assessing, accrediting or assuring quality and standards of educational institutions.</p>

29	Doctor of Philosophy (Ph.D.)	<ul style="list-style-type: none"> • A relaxation of 5% of marks, from 55% to 50%, or an equivalent relaxation of grade, IS allowed for those belonging to SC/ST/OBC (non-creamy layer)/Differently-Abled and other categories of candidates as per the decision of the Commission from time to time. • For those who has obtained their Master's Degree prior to 19th September, 1991, the eligibility marks of 55% (or an equivalent grade in a point scale wherever grading system is followed) and the relaxation of 5% to the categories mentioned above are permissible based only on the qualifying marks without including the grace mark procedures. • Candidates who have cleared the M.Phil. Course work with at least 55% marks in aggregate or its equivalent grade 'B' in the UGC 7-point scale (or an equivalent grade in a point scale wherever grading system is followed) and who have successfully completed the M.Phil. Degree will be eligible to proceed to do research work leading to the Ph.D. degree in the same Institution in an integrated program. • A relaxation of 5% of marks, from 55% to 50%, or an equivalent relaxation of grade, may be allowed for those belonging to SC/ST/OBC (non-creamy layer)/differently abled and other categories of candidates as per the guidelines of the JSS AHER issued from time to time.
----	-------------------------------------	--

Ban on Ragging

- Ragging is a criminal offence as per Karnataka Educational Act 1983 and Hon'ble Supreme Court of India. JSS Academy of Higher Education & Research ensures strict compliance on the prevention of Ragging in any form.

Definition:

- "Ragging" means causing, inducing, compelling or forcing a student, whether by way of a practical joke or otherwise, to do any act which detracts from human dignity or violates his person or exposes him to ridicule or to forbear from doing any lawful act, by intimidating, wrongfully restraining, wrongfully confining or injuring him or by using criminal force to him or by holding out to him any threat of such intimidation, wrongful restraint, wrongful confinement, injury or the use of criminal force. Supreme Court of India has defined ragging as a criminal offence.

Penalty for Ragging:

- No person who is a student of an educational institution shall commit ragging. Supreme Court of India has ordered that "if any incident of ragging comes to the notice of the authority, the concerned student shall be given liberty to explain and if his/her explanation is not found satisfactory, the authority would expel him/her from the institution".

Warning

- No leniency will be shown to the offenders involved in ragging. All students are requested to note and co-operate in keeping our university and its constituent colleges free from ragging.



CAMPUS FACILITIES



Primary Health care



Pharmacy Centre



Library



Hi-Tech Lab



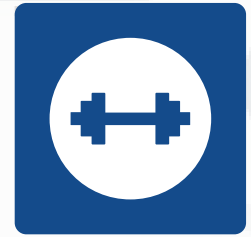
Auditoriums



Cafeteria



Food Courts



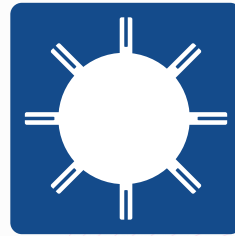
Gymnasium



Spots amenities indoor and outdoor



NRI Apartments



Anti Ragging cell



Placement cell



International Student Cell



Banking and ATM Facility



Centre of Excellence



Student Activity centre



24x7 security



Transport



Smart Class Rooms



Wi-fi campus



Hi-Tech Teaching Hospital



Cycle services within campus



Physically Challenged Friendly campus



Eco Friendly Campus

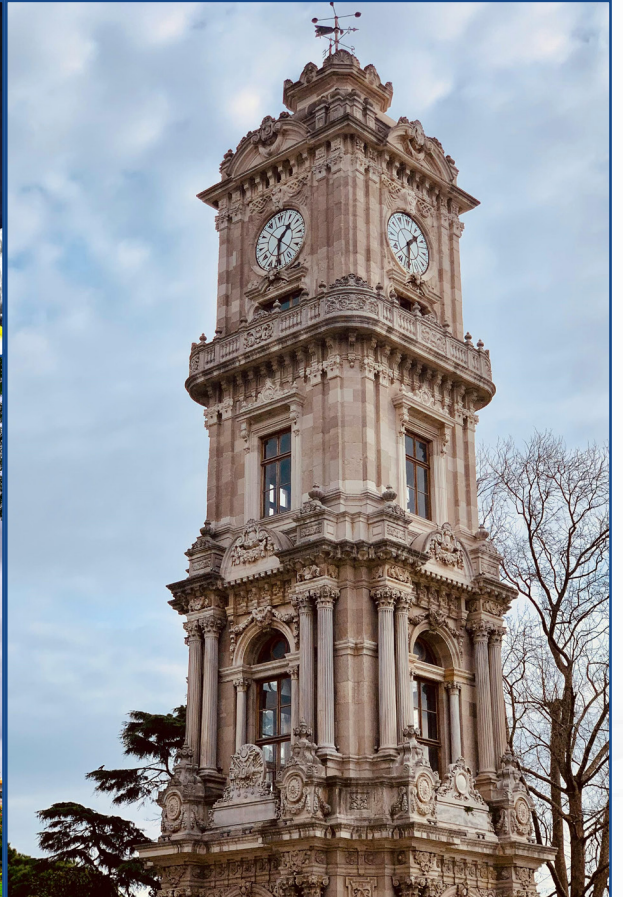
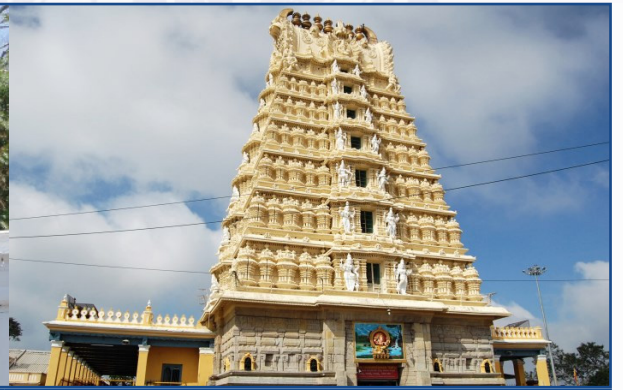
About Mysuru

India pulsates with a spectacular mix of people, traditions and landscapes.

One of South India's most famous tourist destination, Mysuru (which recently changed its name from Mysore) is known for its glittering royal heritage and magnificent monuments and buildings and aptly called the cultural capital of Karnataka. Its World Heritage-listed palace may be what brings most travelers here, but it's also a thriving center for the production of premium silk, sandalwood and incense. These days Ashtanga yoga is another drawcard, attracting visitors worldwide with its reputation as one of India's best places to practice yoga. The nature and peace within the city are a reason to keep visiting Mysuru. The warmth of the people will leave you spellbound.

Mysuru is the global headquarter of Infosys, the world's premier information technology company. Mysuru is also an education hub with Mysore University and several higher education institutions.

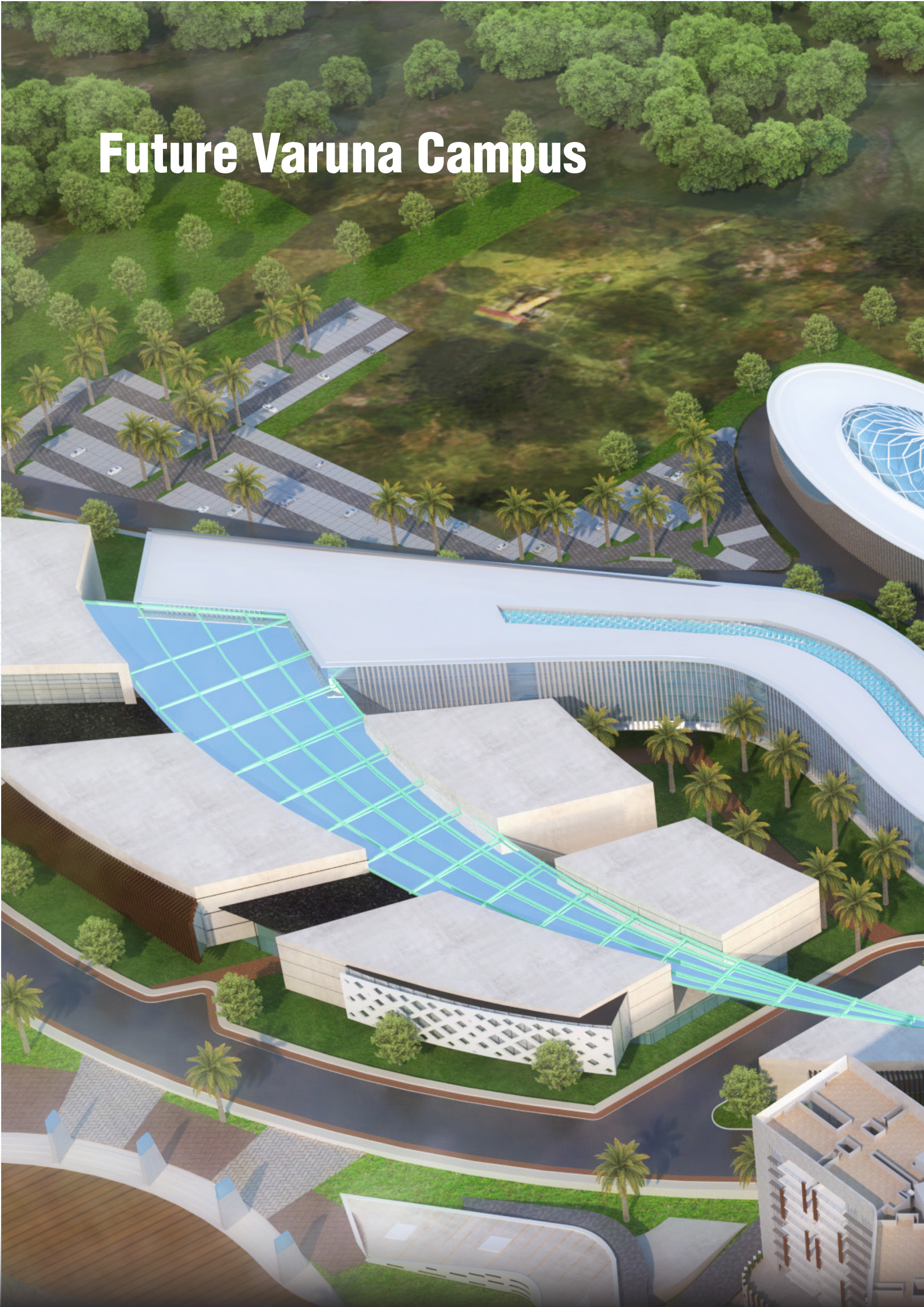
We welcome you to experience the love culture diversity beauty of India through Mysuru.



ಜಿ ಎಸ್ ಎಸ್ ಉನ್ನತ ಶಿಕ್ಷಣ ಮತ್ತು ಸಂಶೋಧನಾ ಅಕಾಡೆಮಿ
JSS ACADEMY OF
HIGHER EDUCATION & RESEARCH



Future Varuna Campus







JSS Academy of Higher Education & Research

(Deemed to be University)

JSS Medical Institutions Campus, Bannimantap
Sri Shivarathreeshwara Nagara, Mysuru - 570 015

🌐 : www.jssuni.edu.in

☎ : +91 821 - 2548014/ 416/ 99808 41859

✉ : admissions@jssuni.edu.in



JSS AHER
Facebook



www.jssuni.edu.in